

11-4040: Polyclonal Antibody to LAT

Clonality :	Polyclonal
Application :	WB
Reactivity :	Human
Gene :	LAT
Gene ID :	27040
Uniprot ID :	O43561
Format :	Purified
Alternative Name :	36 kDa phospho-tyrosine adapter protein, Linker for activation of T-cells family member 1, p36-38
Isotype :	Rabbit IgG
Immunogen Information :	A partial length recombinant LAT protein (amino acids 45-255) was used as the immunogen for this antibody.

Product Info

Amount :	25 µg / 100 µg
Purification :	Protein A Chromatography
Content :	25 µg in 50 µl/100 µg in 200 µl PBS containing 0.05% BSA and 0.05% sodium azide. Sodium azide is highly toxic.
Storage condition :	Store the antibody at 4°C, stable for 6 months. For long-term storage, store at -20°C. Avoid repeated freeze and thaw cycles.

Application Note

Recommended dilutions: WB: 2-4 µg/ml. However, this need to be optimized based on the research applications.

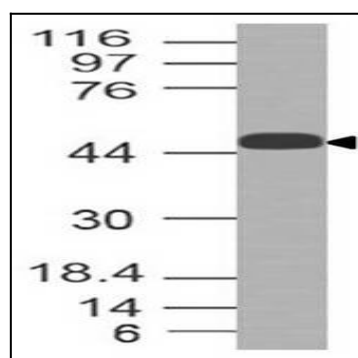


Figure-1: Western blot analysis of LAT. Anti-LAT antibody (11-4040) was used at 2 µg/ml on SKBR3 lysate.