

## 10-4197: Monoclonal antibody to Mouse F4/80 (Clone: ABM5D83)

|                                |   |
|--------------------------------|---|
| <b>Clonality :</b>             | Monoclonal  |
| <b>Clone Name :</b>            | ABM5D83   |
| <b>Application :</b>           | WB  |
| <b>Reactivity :</b>            | Mouse   |
| <b>Gene :</b>                  | Adgre1  |
| <b>Gene ID :</b>               | 13733   |
| <b>Uniprot ID :</b>            | Q61549  |
| <b>Format :</b>                | Purified  |
| <b>Alternative Name :</b>      | Cell surface glycoprotein F4/80, EGF-like module receptor 1, EGF-like module-containing mucin-like hormone receptor-like 1, EMR1 hormone receptor, Emr1, Gpf480 |
| <b>Isotype :</b>               | Rat IgG1, kappa   |
| <b>Immunogen Information :</b> | A partial length recombinant mF4/80 protein (amino acids 20-250) was used as the immunogen for this antibody.   |

### Product Info

|                            |   |
|----------------------------|---|
| <b>Amount :</b>            | 25 µg / 100 µg  |
| <b>Purification :</b>      | Protein G Chromatography  |
| <b>Content :</b>           | 25 µg in 50 µl/100 µg in 200 µl PBS containing 0.05% BSA and 0.05% sodium azide. Sodium azide is highly toxic.                |
| <b>Storage condition :</b> | Store the antibody at 4°C; stable for 6 months. For long-term storage; store at -20°C. Avoid repeated freeze and thaw cycles. |

### Application Note

Recommended dilutions: WB: 4-6 µg/ml. However, this need to be optimized based on the research applications.

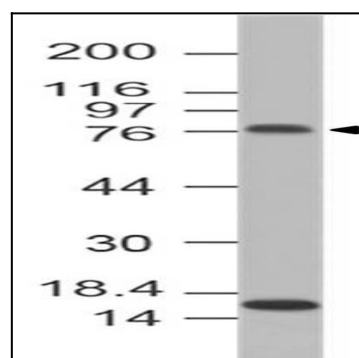


Figure-1: Western blot analysis of mF4/80. Anti-mF4/80 antibody (Clone: ABM5D83) was tested at 4 µg/ml on BV2 lysate.