

10-8016: Monoclonal antibody to CCR2 (Clone: ABM58F2)

Clonality :	Monoclonal
Clone Name :	ABM58F2
Application :	WB
Reactivity :	Human
Gene :	CCR2
Gene ID :	729230
Uniprot ID :	P41597
Format :	Purified
Alternative Name :	Monocyte chemoattractant protein 1 receptor, CD192
Isotype :	Mouse IgG
Immunogen Information :	A partial length recombinant CCR2 protein (amino acids 10-230) was used as the immunogen for this antibody.

Product Info

Amount :	25 µg / 100 µg
Purification :	Protein G Chromatography
Content :	25 µg in 50 µl/100 µg in 200 µl PBS containing 0.05% BSA and 0.05% sodium azide. Sodium azide is highly toxic.
Storage condition :	Store the antibody at 4°C; stable for 6 months. For long-term storage; store at -20°C. Avoid repeated freeze and thaw cycles.

Application Note

Recommended dilutions: WB: 2-4 µg/ml. However, this need to be optimized based on the research applications.

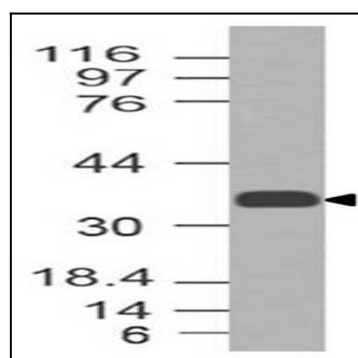


Figure-1: Western blot analysis of CCR2. Anti-CCR2 antibody (Clone: ABM58F2) was tested at 2 µg/ml on h Spleen lysate.