

11-8117: Polyclonal Antibody to Lamin A/C

Clonality :	Polyclonal
Application :	WB
Reactivity :	Rat,Human
Gene :	LMNA
Gene ID :	4000
Uniprot ID :	P02545
Format :	Purified
Alternative Name :	70 kDa lamin, Renal carcinoma antigen NY-REN-32, LMN1
Isotype :	Rabbit IgG
Immunogen Information :	A partial length recombinant Lamin A/C protein (amino acids 235-450) was used as the immunogen for this antibody.

Product Info

Amount :	25 µg / 100 µg
Purification :	Protein A Chromatography
Content :	25 µg in 50 µl/100 µg in 200 µl PBS containing 0.05% BSA and 0.05% sodium azide. Sodium azide is highly toxic.
Storage condition :	Store the antibody at 4°C, stable for 6 months. For long-term storage, store at -20°C. Avoid repeated freeze and thaw cycles.

Application Note

Recommended dilutions: WB: 1-2 µg/ml. However, this need to be optimized based on the research applications.

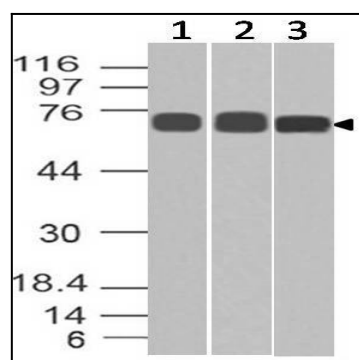


Figure-1: Western blot analysis of Lamin A/C. Anti-Lamin A/C antibody (11-8117) was used at 1 µg/ml on (1) h Testis, (2) h Ovary and (3) r Ovary lysates.