

11-8116: Polyclonal Antibody to CENTB2

Clonality :	Polyclonal
Application :	WB
Reactivity :	Rat,Mouse,Human
Gene :	ACAP2
Gene ID :	23527
Uniprot ID :	Q15057
Format :	Purified
Alternative Name :	KIAA0041, Centaurin-beta-2
Isotype :	Rabbit IgG
Immunogen Information :	A partial length recombinant CENTB2 protein (amino acids 350-565) was used as the immunogen for this antibody.

Product Info

Amount :	25 µg / 100 µg
Purification :	Protein A Chromatography
Content :	25 µg in 50 µl/100 µg in 200 µl PBS containing 0.05% BSA and 0.05% sodium azide. Sodium azide is highly toxic.
Storage condition :	Store the antibody at 4°C, stable for 6 months. For long-term storage, store at -20°C. Avoid repeated freeze and thaw cycles.

Application Note

Recommended dilutions: WB: 2-4 µg/ml. However, this need to be optimized based on the research applications.

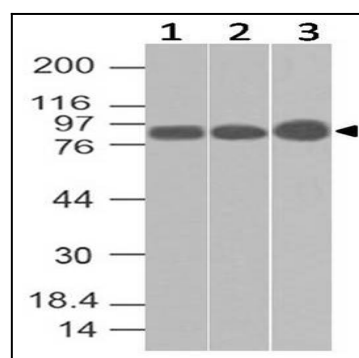


Figure-1: Western blot analysis of CENTB2. Anti-CENTB2 antibody (11-8116) was used at 2 µg/ml on (1) h Kidney and 1 µg/ml on (2) m Kidney, (3) r Kidney lysates.