

## 12-1170: Anti-E-Cadherin (CDH1) / CD324 (Intercellular Junction Marker) Recombinant Mouse Monoclonal Antibody (Clone:rCDH1/1525)

<b>Clonality :</b>	Monoclonal
<b>Clone Name :</b>	rCDH1/1525
<b>Application :</b>	IHC,FACS,WB,IF
<b>Reactivity :</b>	Human
<b>Gene :</b>	CDH1
<b>Gene ID :</b>	999
<b>Uniprot ID :</b>	P12830
<b>Format :</b>	Purified
<b>Alternative Name :</b>	Arc 1; cadherin 1 type 1 E-cadherin; Cadherin1; CAM 120/80; CD324; CDH1; CDHE; E-Cad/CTF3; E-cadherin; ECAD; Epithelial cadherin; epithelial calcium dependent adhesion protein; Liver cell adhesion molecule (LCAM); Uvomorulin (UVO)
<b>Isotype :</b>	Mouse IgG1
<b>Immunogen Information :</b>	Recombinant full-length human E-Cadherin protein

### Description

Recognizes a protein of 120-80kDa, identified as E-cadherin. Cadherins comprise a family of Ca<sup>2+</sup>-dependent adhesion molecules that function to mediate cell-cell binding critical to the maintenance of tissue structure and morphogenesis. The classical cadherins, E-, N- and P-cadherin, consist of large extracellular domains characterized by a series of five homologous NH<sub>2</sub> terminal repeats. The relatively short intracellular domains interact with a variety of cytoplasmic proteins, such as -catenin, to regulate cadherin function. E-cadherin plays an important role in epithelial cell adhesion. A decreased expression of E-cadherin is associated with metastatic potential and poor prognosis in breast cancer, prostate and esophageal cancer. In combination with p120 Catenin, it is useful for the differentiation between ductal (E-cadherin +) and lobular (E-cadherin -) breast carcinomas. It may also help in diagnosis of mesothelioma.

### Product Info

<b>Amount :</b>	20 µg / 100 µg
<b>Purification :</b>	Protein A/G
<b>Content :</b>	200µg/ml of recombinant MAb purified by Protein A/G. Prepared in 10mM PBS with 0.05% BSA & 0.05% azide. Also available WITHOUT BSA & azide at 1.0mg/ml.
<b>Storage condition :</b>	Antibody with azide - store at 2 to 8°C. Antibody without azide - store at -20 to -80°C. Antibody is stable for 24 months. Non-hazardous.

### Application Note

Flow Cytometry (1-2µg/million cells); Immunofluorescence (1-2µg/ml); Western Blot (1-2µg/ml); ,Immunohistochemistry (Formalin-fixed) (1-2µg/ml for 30 minutes at RT),(Staining of formalin-fixed tissues requires heating tissue sections in 10mM Tris with 1mM EDTA, pH 9.0, for 45 min at 95 °C followed by cooling at RT for 20 minutes),

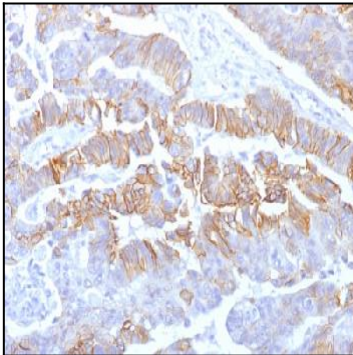


Figure 1: Formalin-fixed, paraffin-embedded human Colon Carcinoma stained with E-Cadherin Mouse Recombinant Monoclonal Antibody (rCDH1/1525).

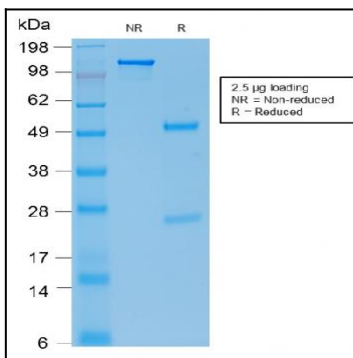


Figure 2: SDS-PAGE Analysis of Purified E-Cadherin Mouse Recombinant Monoclonal Antibody (rCDH1/1525).