

## 12-1221: Anti-Napsin A (Lung Adenocarcinoma Marker) Recombinant Mouse Monoclonal Antibody (Clone:rNAPSA/1239)

<b>Clonality :</b>	Monoclonal
<b>Clone Name :</b>	rNAPSA/1239
<b>Application :</b>	IHC
<b>Reactivity :</b>	Human
<b>Gene :</b>	NAPSA
<b>Gene ID :</b>	9476
<b>Uniprot ID :</b>	O96009
<b>Format :</b>	Purified
<b>Alternative Name :</b>	ASP4, Aspartyl protease 4, KAP, Kidney derived aspartic protease like protein (Kdap), NAP1, NAPA, Napsa, napsin A aspartic peptidase, Pronapsin A, SNAPA
<b>Isotype :</b>	Mouse IgG1, kappa
<b>Immunogen Information :</b>	Recombinant fragment of human Napsin-A protein (aa 189-299) (exact sequence is proprietary)

### Description

Napsin is a pepsin-like aspartic proteinase connected with maturation of surfactant protein B. There are two closely related napsins, napsin A and napsin B. Napsin A is expressed as a single chain protein. Immunohistochemical studies revealed high expression levels of napsin A in human lung and kidney but low expression in spleen. Napsin A is expressed in type II pneumocytes and in adenocarcinomas of lung. The high specificity expression of napsin A in adenocarcinomas of lung is useful to distinguish primary lung adenocarcinomas from adenocarcinomas of other organs.

### Product Info

<b>Amount :</b>	20 µg / 100 µg
<b>Purification :</b>	Protein A/G
<b>Content :</b>	200µg/ml of recombinant MAb purified by Protein A/G. Prepared in 10mM PBS with 0.05% BSA & 0.05% azide. Also available WITHOUT BSA & azide at 1.0mg/ml.
<b>Storage condition :</b>	Antibody with azide - store at 2 to 8°C. Antibody without azide - store at -20 to -80°C. Antibody is stable for 24 months. Non-hazardous.

### Application Note

Immunohistochemistry (Formalin-fixed) (1-2µg/ml for 30 minutes at RT)(Staining of formalin-fixed tissues requires heating tissue sections in 10mM Tris with 1mM EDTA, pH 9.0, for 45 min at 95°C followed by cooling at RT for 20 minutes);

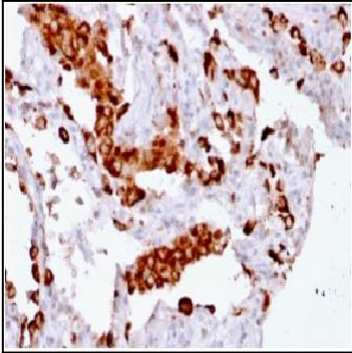


Figure 1: Formalin-fixed, paraffin-embedded human Lung Adenocarcinoma stained with Napsin A Mouse Recombinant Monoclonal Antibody (rNAPSA/1239).

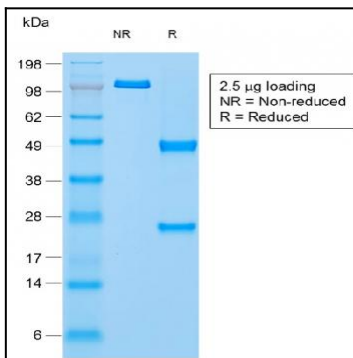


Figure 2: SDS-PAGE Analysis Purified Napsin A Mouse Monoclonal Antibody (rNAPSA/1239).