

12-1252: Anti-Thyroglobulin (Thyroidal Cell Marker) Recombinant Rabbit Monoclonal Antibody (Clone:TGB/1968R)

| | |
|--------------------------------|--------------------------------|
| Clonality : | Monoclonal |
| Clone Name : | TGB/1968R |
| Application : | IHC |
| Reactivity : | Human |
| Gene : | TG |
| Gene ID : | 7038 |
| Uniprot ID : | P01266 |
| Format : | Purified |
| Alternative Name : | AITD3; hTG; TDH3; Tg; Tgn |
| Isotype : | Rabbit IgG |
| Immunogen Information : | Human thyroid follicular cells |

Description

Thyroglobulin is a 660kDa dimeric pre-protein with multiple glycosylation sites. It is produced by and processed within the thyroid gland to produce the hormone thyroxine and triiodothyronine. Prior to forming dimers, thyroglobulin monomers undergo conformational maturation in the endoplasmic reticulum. The vast majority of follicular carcinomas of the thyroid will give positive immunoreactivity for anti-thyroglobulin even though sometimes only focally. Poorly differentiated carcinomas of the thyroid are frequently anti-thyroglobulin negative. Adenocarcinomas of other-than-thyroid origin do not react with this antibody. This antibody is useful in identification of thyroid carcinoma of the papillary and follicular types. Presence of thyroglobulin in metastatic lesions establishes the thyroid origin of tumor. Anti-thyroglobulin, combined with anti-calcitonin, can identify medullary carcinomas of the thyroid. Furthermore, anti-thyroglobulin, combined with anti-TTF1, can be a reliable marker to differentiate between primary thyroid and lung neoplasms.

Product Info

| | |
|----------------------------|---|
| Amount : | 20 µg / 100 µg |
| Purification : | Protein A/G |
| Content : | 200µg/ml of recombinant MAb purified by Protein A/G. Prepared in 10mM PBS with 0.05% BSA & 0.05% azide. Also available WITHOUT BSA & azide at 1.0mg/ml. |
| Storage condition : | Antibody with azide - store at 2 to 8°C. Antibody without azide - store at -20 to -80°C. Antibody is stable for 24 months. Non-hazardous. |

Application Note

Immunohistochemistry (Formalin-fixed) (1-2µg/ml for 30 min at RT) (Staining of formalin-fixed tissues requires heating tissue sections in 10mM Tris with 1mM EDTA, pH 9.0, for 45 min at 95°C followed by cooling at RT for 20 minutes);

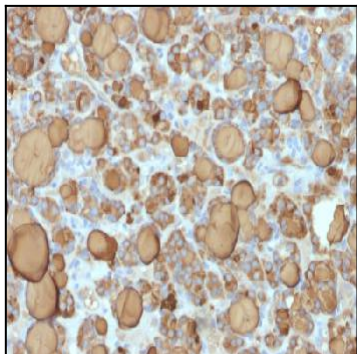


Figure 1: Formalin-fixed, paraffin-embedded human Thyroid Carcinoma stained with Thyroglobulin Rabbit Recombinant Monoclonal Antibody (TGB/1968R).

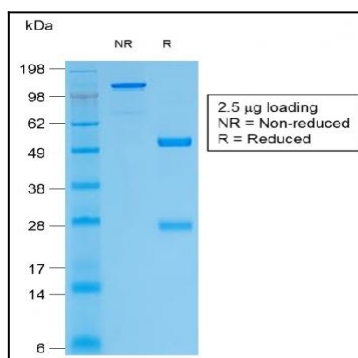


Figure 2: SDS-PAGE Analysis of Purified Thyroglobulin Rabbit Recombinant Monoclonal Antibody (TGB/1968R).