

## 12-1074: Anti-Bcl-2 (Apoptosis and Follicular Lymphoma Marker) Recombinant Mouse Monoclonal Antibody (Clone:rBCL2/796)

<b>Clonality :</b>	Monoclonal
<b>Clone Name :</b>	rBCL2/796
<b>Application :</b>	FACS,IF,WB,IHC
<b>Reactivity :</b>	Human
<b>Gene :</b>	BCL2
<b>Gene ID :</b>	596
<b>Uniprot ID :</b>	P10415
<b>Format :</b>	Purified
<b>Alternative Name :</b>	Apoptosis regulator Bcl-2, B-cell CLL/lymphoma-2
<b>Isotype :</b>	Mouse IgG1, kappa
<b>Immunogen Information :</b>	Recombinant full-length human bcl-2 protein

### Description

This antibody recognizes a protein of 25-26kDa, identified as the bcl-2 oncoprotein. It shows no cross-reaction with Bcl-x or Bax protein. Expression of bcl-2 oncoprotein inhibits the programmed cell death (apoptosis). In most follicular lymphomas, neoplastic germinal centers express high levels of bcl-2 protein, whereas the normal or hyperplastic germinal centers are negative. Consequently, this antibody is valuable when distinguishing between reactive and neoplastic follicular proliferation in lymph node biopsies. It may also be used in distinguishing between those follicular lymphomas that express bcl-2 protein and the small number in which the neoplastic cells are bcl-2 negative.

### Product Info

<b>Amount :</b>	20 µg / 100 µg
<b>Purification :</b>	Protein A/G
<b>Content :</b>	200µg/ml of recombinant MAbs purified by Protein A/G. Prepared in 10mM PBS with 0.05% BSA & 0.05% azide. Also available WITHOUT BSA & azide at 1.0mg/ml.
<b>Storage condition :</b>	Antibody with azide - store at 2 to 8°C. Antibody without azide - store at -20 to -80°C. Antibody is stable for 24 months. Non-hazardous.

### Application Note

Flow Cytometry (1-2 $\times$ 10<sup>5</sup>µg/million cells); Immunofluorescence (1-2 $\times$ 10<sup>5</sup>µg/ml); Western Blot (1-2 $\times$ 10<sup>5</sup>µg/ml); Immunohistochemistry (Formalin-fixed) (1-2 $\times$ 10<sup>5</sup>µg/ml for 30 minutes at RT),(Staining of formalin-fixed tissues is enhanced by heating tissue sections in 10mM Tris with 1mM EDTA Buffer, pH 9.0, for 45 min at 95°C followed by cooling at RT for 20 minutes),

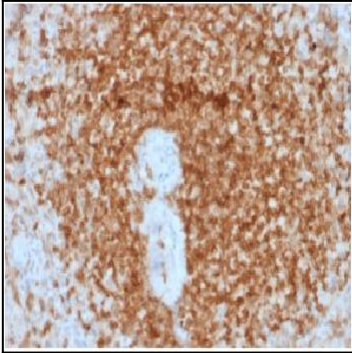


Figure 1: Formalin-fixed, paraffin-embedded human Spleen stained with Bcl-2 Mouse Recombinant Monoclonal Antibody (rBCL2/796).

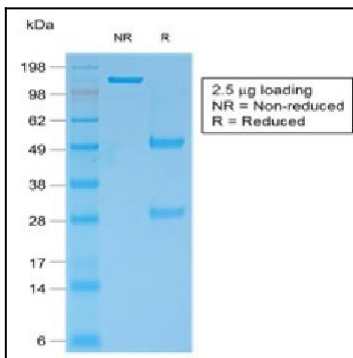


Figure 2: SDS-PAGE Analysis of Purified Bcl-2 Mouse Recombinant Monoclonal Antibody (rBCL2/796).