

12-1240: Anti-Rb1 (Tumor Suppressor Protein) Recombinant Rabbit Monoclonal Antibody (Clone:RB1/2313R)

| | |
|--------------------------------|--|
| Clonality : | Monoclonal |
| Clone Name : | RB1/2313R |
| Application : | IHC |
| Reactivity : | Human, Mouse |
| Gene : | RB1 |
| Gene ID : | 5925 |
| Uniprot ID : | P06400 |
| Format : | Purified |
| Alternative Name : | OSRC; Osteosarcoma; p105-Rb; PP105; pp110; pRb; Prepro retinoblastoma associated protein; RB1; Retinoblastoma 1; Retinoblastoma-associated protein |
| Isotype : | Rabbit IgG |
| Immunogen Information : | Recombinant full-length human Rb1 protein |

Description

Recognizes a 105kDa phosphoprotein, identified as retinoblastoma (Rb) gene product. Its epitope is localized between aa 703-772. It shows no cross reaction with p107 or p130. It specifically stains the nuclei of BT-20 cells and primary human foreskin fibroblast (HFF) cells. It does not stain the Rb-negative BT549 cells. It reacts with the hyperphosphorylated as well as the un (under) phosphorylated form of the Rb protein. Retinoblastoma gene product plays a key role in cell cycle control. It has been identified as a tumor suppressor gene whose loss of its function leads to tumor development. It is widely expressed in a variety of human tissues including breast, esophageal, squamous cell and cervical carcinoma.

Product Info

| | |
|----------------------------|---|
| Amount : | 20 µg / 100 µg |
| Purification : | Protein A/G |
| Content : | 200µg/ml of recombinant MAb purified by Protein A/G. Prepared in 10mM PBS with 0.05% BSA & 0.05% azide. Also available WITHOUT BSA & azide at 1.0mg/ml. |
| Storage condition : | Antibody with azide - store at 2 to 8°C. Antibody without azide - store at -20 to -80°C. Antibody is stable for 24 months. Non-hazardous. |

Application Note

Immunohistochemistry (Formalin-fixed) (1-2µg/ml for 30 minutes at RT)(Staining of formalin-fixed tissues requires heating tissue sections in 10mM Tris with 1mM EDTA, pH 9.0, for 45 min at 95°C followed by cooling at RT for 20 minutes);

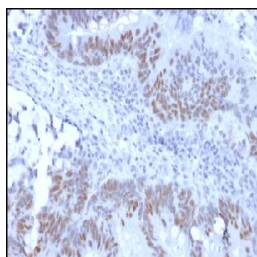


Figure 1: Formalin-fixed, paraffin-embedded human Colon Carcinoma stained with Retinoblastoma Recombinant Rabbit Monoclonal Antibody (RB1/2313R).

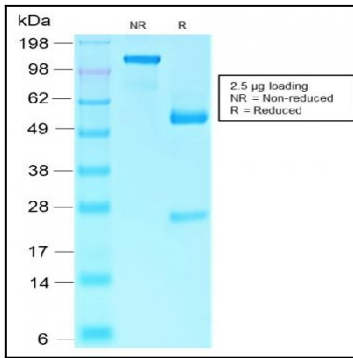


Figure 2: SDS-PAGE Analysis Purified Retinoblastoma Recombinant Rabbit Monoclonal Antibody (RB1/2313R).