

## 12-1218: Anti-MUC6 (Mucin 6 / Gastric Mucin) Recombinant Rabbit Monoclonal Antibody (Clone:MUC6/1553R)

<b>Clonality :</b>	Monoclonal
<b>Clone Name :</b>	MUC6/1553R
<b>Application :</b>	IHC
<b>Reactivity :</b>	Human
<b>Gene :</b>	MUC6
<b>Gene ID :</b>	4588
<b>Uniprot ID :</b>	Q6W4X9
<b>Format :</b>	Purified
<b>Alternative Name :</b>	Gastric mucin 6; MUC6; MUC6 mucin; Mucin 6 oligomeric mucus/gel forming; Mucin glycoprotein Fragment; Mucin-6; Secretory mucin MUC6
<b>Isotype :</b>	Rabbit IgG
<b>Immunogen Information :</b>	A synthetic peptide of the Gastric Mucin 6 tandem repeat sequence

### Description

The MUC6 gastric mucin is a secreted glycoprotein that plays an essential role in epithelial cyto-protection from acid, proteases, pathogenic microorganisms, and mechanical trauma in the gastrointestinal tract. Mucin 6 expression is highest in the stomach and gall bladder, with lower expression in the terminal ileum and right colon. In gastric cancer, Mucin 6 has an altered expression. In normal stomach, Mucin 6 is associated with Lewis type 2; Mucin 6 is also expressed in gastric metaplasia, duodenum and pancreas. Mucin 6 is a secretory mucin, located in the deeper mucosal folds of human gall bladder, and its expression is altered with increasing degrees of inflammation.

### Product Info

<b>Amount :</b>	20 µg / 100 µg
<b>Purification :</b>	Protein A/G
<b>Content :</b>	200µg/ml of recombinant MAb purified by Protein A/G. Prepared in 10mM PBS with 0.05% BSA & 0.05% azide. Also available WITHOUT BSA & azide at 1.0mg/ml.
<b>Storage condition :</b>	Antibody with azide - store at 2 to 8°C. Antibody without azide - store at -20 to -80°C. Antibody is stable for 24 months. Non-hazardous.

### Application Note

Immunohistochemistry (Formalin-fixed) (2-4µg/ml for 30 minutes at RT)(Staining of formalin-fixed tissues requires heating tissue sections in 10mM Tris with 1mM EDTA, pH 9.0, for 45 min at 95°C followed by cooling at RT for 20 minutes);

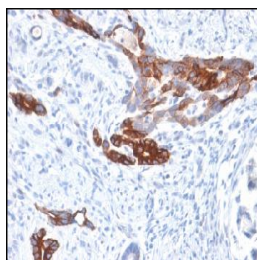


Figure 1: Formalin-fixed, paraffin-embedded human Gastric Carcinoma stained with MUC6 Rabbit Recombinant Monoclonal Antibody (MUC6/1553R).

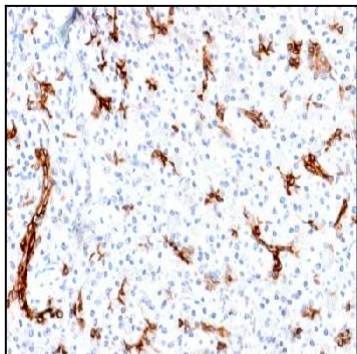


Figure 2: Formalin-fixed, paraffin-embedded human Pancreas stained with MUC6 Rabbit Recombinant Monoclonal Antibody (MUC6/1553R).

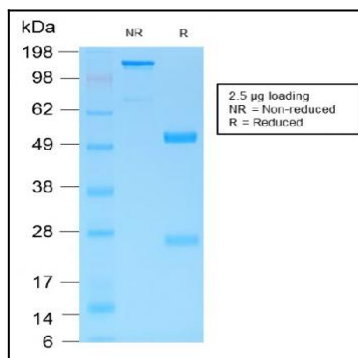


Figure 3: SDS-PAGE Analysis of Purified MUC6 Rabbit Recombinant Monoclonal Antibody (MUC6/1553R).