

12-1210: Anti-MMP3 Recombinant Rabbit Monoclonal Antibody (Clone:MMP3/1994R)

| | |
|--------------------------------|--|
| Clonality : | Monoclonal |
| Clone Name : | MMP3/1994R |
| Application : | ELISA,FACS,WB |
| Reactivity : | Human |
| Gene : | MMP3 |
| Gene ID : | 4314 |
| Uniprot ID : | P08254 |
| Format : | Purified |
| Alternative Name : | CHDS6; Matrix metalloproteinase 3; Matrix metalloproteinase-3; MGC126102; MGC126103; MGC126104; MMP 3; MMP-3; MMP3; Proteoglycanase; SL-1; SL1; STMY; STMY1; STR1; Stromelysin 1; Stromelysin-1; Transin 1 |
| Isotype : | Rabbit IgG |
| Immunogen Information : | Recombinant fragment of human MMP3 protein (around aa 317-327) (exact sequence is proprietary) |

Description

The matrix metalloproteinases (MMP) are a family of peptidase enzymes responsible for the degradation of extracellular matrix components, including collagen, gelatin, fibronectin, laminin and proteoglycan. Transcription of MMP genes is differentially activated by phorbol ester, lipopolysaccharide (LPS) or staphylococcal enterotoxin B (SEB). MMP catalysis requires both calcium and zinc. MMP-3, MMP-10 and MMP-11 (also designated stromelysin-1, 2 and 3, respectively) activate procollagenase. MMP-3 activation of procollagenase can occur via two pathways. Direct activation by MMP-3 is slow and activation by MMP-3 in conjunction with tissue or plasma proteinases is rapid. MMP-10 is expressed in small intestine, and at lower levels in lung and heart. MMP-11 is specifically expressed in stromal cells of breast carcinomas and contributes to epithelial cell malignancies.

Product Info

| | |
|----------------------------|---|
| Amount : | 20 µg / 100 µg |
| Purification : | Protein A/G |
| Content : | 200µg/ml of recombinant MAb purified by Protein A/G. Prepared in 10mM PBS with 0.05% BSA & 0.05% azide. Also available WITHOUT BSA & azide at 1.0mg/ml. |
| Storage condition : | Antibody with azide - store at 2 to 8°C. Antibody without azide - store at -20 to -80°C. Antibody is stable for 24 months. Non-hazardous. |

Application Note

ELISA (For coating, order antibody without BSA); Flow Cytometry (1-2 \times 10⁵µg/million cells); Western Blot (1-2 \times 10⁵µg/ml);

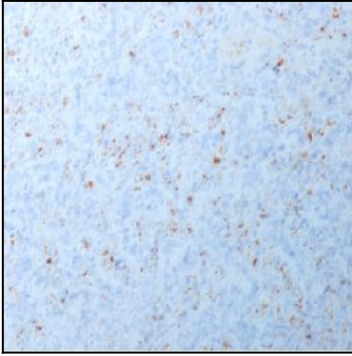


Figure 1: Formalin-fixed, paraffin-embedded human spleen stained with MMP3 Rabbit Recombinant Monoclonal Antibody (MMP3/1994R).

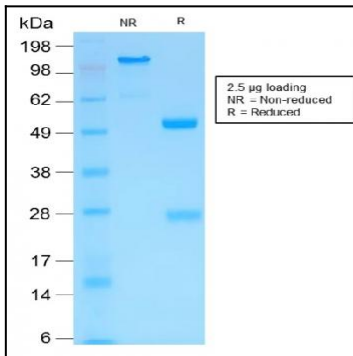


Figure 2: SDS-PAGE Analysis of Purified MMP3 Rabbit Recombinant Monoclonal Antibody (MMP3/1994R).