

## 12-1176: Anti-Ep-CAM / CD326 (Extracellular Domain) (Epithelial Marker) Recombinant Mouse Monoclonal Antibody (Clone:rEGP40/1372)

<b>Clonality :</b>	Monoclonal
<b>Clone Name :</b>	rEGP40/1372
<b>Application :</b>	WB,IHC
<b>Reactivity :</b>	Human
<b>Gene :</b>	TACSTD1
<b>Gene ID :</b>	4072
<b>Uniprot ID :</b>	P16422
<b>Format :</b>	Purified
<b>Alternative Name :</b>	Adenocarcinoma-associated Antigen; Cell Surface Glycoprotein Trop-1; EGP2; EGP314; EGP40; Epithelial Cell Adhesion Molecule; Epithelial Glycoprotein 314; ESA; KSA; TACD1; TROP1; Tumor-associated Calcium Signal Transducer 1 (TACSTD1); ECS-1; Epidermal Surface Antigen 1; ESA1; FLOT2; Flotillin-2; Membrane Component, Chromosome 17, Surface Marker-1 (M17S1); REG-1; Reggie-1; Reggie-2
<b>Isotype :</b>	Mouse IgG1, kappa
<b>Immunogen Information :</b>	Recombinant ECD-fragment of human EpCAM protein (around aa 77-202) (exact sequence is proprietary)

### Description

EGP40 is a 40-43kDa transmembrane epithelial glycoprotein, also identified as epithelial specific antigen (ESA), or epithelial cellular adhesion molecule (Ep-CAM). It is expressed on baso-lateral cell surface in most simple epithelia and a vast majority of carcinomas. This antibody has been used to distinguish adenocarcinoma from pleural mesothelioma and hepatocellular carcinoma. This antibody is also useful in distinguishing serous carcinomas of the ovary from mesothelioma.

### Product Info

<b>Amount :</b>	20 µg / 100 µg
<b>Purification :</b>	Protein A/G
<b>Content :</b>	200µg/ml of recombinant MAb purified by Protein A/G. Prepared in 10mM PBS with 0.05% BSA & 0.05% azide. Also available WITHOUT BSA & azide at 1.0mg/ml.
<b>Storage condition :</b>	Antibody with azide - store at 2 to 8°C. Antibody without azide - store at -20 to -80°C. Antibody is stable for 24 months. Non-hazardous.

### Application Note

Western Blot (1-2 $\mu$ g/ml); ,Immunohistochemistry (Formalin-fixed) (1-2 $\mu$ g/ml for 30 minutes at RT),(Staining of formalin-fixed tissues requires heating tissue sections in 10mM Tris with 1mM EDTA, pH 9.0, for 45 min at 95 &degC followed by cooling at RT for 20 minutes),

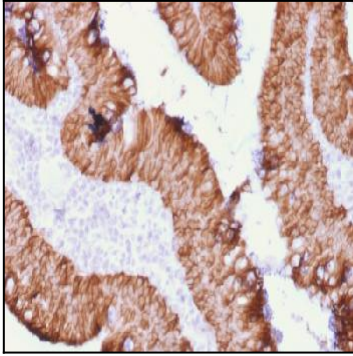


Figure 1: Formalin-fixed, paraffin-embedded Human Rectal Mass stained with EpCAM Mouse Recombinant Monoclonal Antibody (rEGP40/1372).

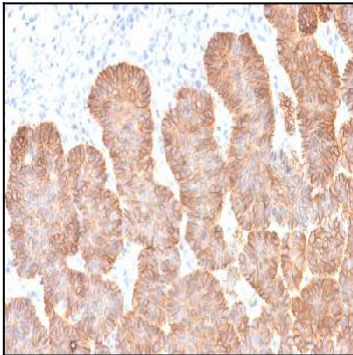


Figure 2: Formalin-fixed, paraffin-embedded Human Skin tissue stained with EpCAM Mouse Recombinant Monoclonal Antibody (rEGP40/1372).

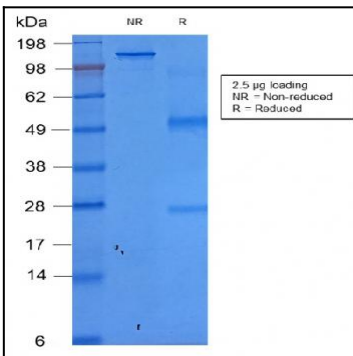


Figure 3: SDS-PAGE Analysis Purified EpCAM Mouse Recombinant Monoclonal Antibody (rEGP40/1372).