

## 12-1155: Anti-Cytokeratin 16 (KRT16) (Suprabasal Keratinocyte Marker) Recombinant Mouse Monoclonal Antibody (Clone:KRT16/1714)

<b>Clonality :</b>	Monoclonal
<b>Clone Name :</b>	KRT16/1714
<b>Application :</b>	IHC
<b>Reactivity :</b>	Human
<b>Gene :</b>	KRT16
<b>Gene ID :</b>	3868
<b>Uniprot ID :</b>	P08779
<b>Format :</b>	Purified
<b>Alternative Name :</b>	CK16; Cytokeratin-16; Focal non epidermolytic palmoplantar keratoderma (FNEPPK / NEPPK); K1CP; Keratin Type I Cytoskeletal 16; Keratin-16; KRT16A
<b>Isotype :</b>	Mouse IgG1, kappa
<b>Immunogen Information :</b>	Recombinant full-length human KRT16 protein

### Description

Cytokeratins are a family of intermediate filament proteins that assemble into filaments through forming heterodimers of one type I Cytokeratins (Cytokeratins 9 to 23) and one type II Cytokeratins (keratins 1 to 8). The cytokeratin proteins play a critical role in differentiation, as well as tissue specialization and function, to maintain the overall structural integrity of epithelial cells. Cytokeratins are also useful markers in identifying the origin of metastatic tumors. Cytokeratin 16 is expressed in benign stratified squamous epithelium and squamous cell carcinoma of the head and neck, as well as luminal cells of mammary gland and sweat ducts. It is absent in non-invasive breast carcinomas and normal breast tissue.

### Product Info

<b>Amount :</b>	20 µg / 100 µg
<b>Purification :</b>	Protein A/G
<b>Content :</b>	200µg/ml of recombinant MAb purified by Protein A/G. Prepared in 10mM PBS with 0.05% BSA & 0.05% azide. Also available WITHOUT BSA & azide at 1.0mg/ml.
<b>Storage condition :</b>	Antibody with azide - store at 2 to 8°C. Antibody without azide - store at -20 to -80°C. Antibody is stable for 24 months. Non-hazardous.

### Application Note

Immunohistochemistry (Formalin-fixed) (0.1-0.2 µg/ml for 30 min at RT)(Staining of formalin-fixed tissues requires heating tissue sections in 10mM Tris with 1mM EDTA, pH 9.0, for 45 min at 95°C followed by cooling at RT for 20 minutes);

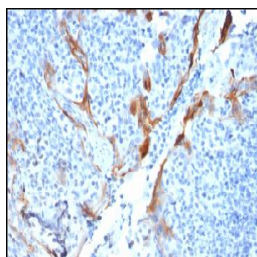


Figure 1: Formalin-fixed paraffin-embedded human Tonsil stained with Cytokeratin 16 Mouse Recombinant Monoclonal Antibody (KRT16/1714).

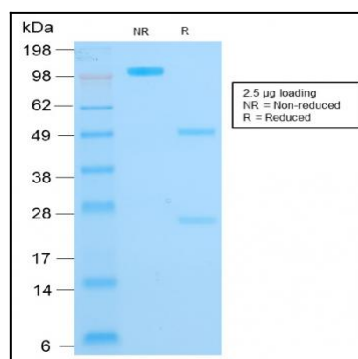


Figure 2: SDS-PAGE Analysis of Purified Cytokeratin 16 Mouse Recombinant Monoclonal Antibody (KRT16/1714).