

## 12-1154: Anti-Cytokeratin 15 (KRT15) (Basal Cell Marker) Recombinant Rabbit Monoclonal Antibody (Clone:KRT15/2103R)

<b>Clonality :</b>	Monoclonal
<b>Clone Name :</b>	KRT15/2103R
<b>Application :</b>	FACS,IHC
<b>Reactivity :</b>	Human, Rat
<b>Gene :</b>	KRT15
<b>Gene ID :</b>	3866
<b>Uniprot ID :</b>	P19012
<b>Format :</b>	Purified
<b>Alternative Name :</b>	CK15; Cytokeratin 15; K1CO; Ka15; Keratin 15 basic; Keratin 15 beta; Keratin complex 1 acidic gene 15; Keratin type I cytoskeletal 15; KRT15; KRTB; KRTL15; Type I cytoskeletal 15; Type I keratin Ka15
<b>Isotype :</b>	Rabbit IgG
<b>Immunogen Information :</b>	Recombinant full-length of human KRT15 protein

### Description

Keratins are a family of intermediate filament proteins that assemble into filaments through forming heterodimers of one type I keratin (keratins 9 to 23) and one type II keratin (keratins 1 to 8). Keratins demonstrate tissue and differentiation specific expression profiles. Keratin 15 is a type I keratin which is expressed only in basal keratinocytes in stratified epithelia and does not appear to have a natural type II expression partner. Keratin 15 is down regulated in activated keratinocytes. Cytokeratin 15 is a specific marker of stem cells of the hair-follicle bulge and may be a useful marker for diagnosis between basal cell carcinoma (BCC) and trichoepithelioma. Trichoblastoma are benign neoplasms of follicular differentiation frequently found in nevus sebaceous. Many morphologic features are shared with nodular basal cell carcinoma, sometimes rendering a diagnosis difficult. Trichoblastoma and BCC show variable expression of Cytokeratin 15 and Cytokeratin 19, and absence of hair keratins.

### Product Info

<b>Amount :</b>	20 µg / 100 µg
<b>Purification :</b>	Protein A/G
<b>Content :</b>	200µg/ml of recombinant MAb purified by Protein A/G. Prepared in 10mM PBS with 0.05% BSA & 0.05% azide. Also available WITHOUT BSA & azide at 1.0mg/ml.
<b>Storage condition :</b>	Antibody with azide - store at 2 to 8°C. Antibody without azide - store at -20 to -80°C. Antibody is stable for 24 months. Non-hazardous.

### Application Note

Flow Cytometry (1-2 $\times$ 10<sup>5</sup>µg/million cells); Immunohistochemistry (Formalin-fixed) (1-2 $\times$ 10<sup>5</sup>µg/ml for 30 min at RT)(Staining of formalin-fixed tissues requires heating tissue sections in 10mM Tris with 1mM EDTA, pH 9.0, for 45 min at 95°C followed by cooling at RT for 20 minutes);

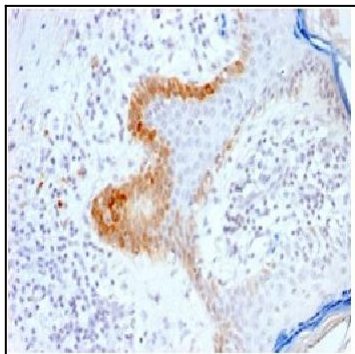


Figure 1: Formalin-fixed, paraffin-embedded human Skin stained with Cytokeratin 15 Rabbit Recombinant Monoclonal Ab (KRT15/2103R).

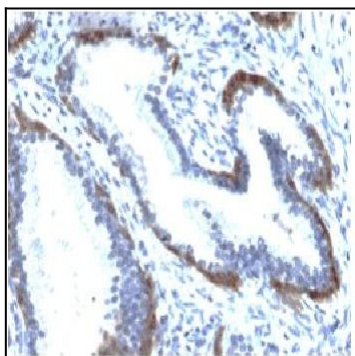


Figure 2: Formalin-fixed, paraffin-embedded human Prostate stained with Cytokeratin 15 Rabbit Recombinant Monoclonal Ab (KRT15/2103R).

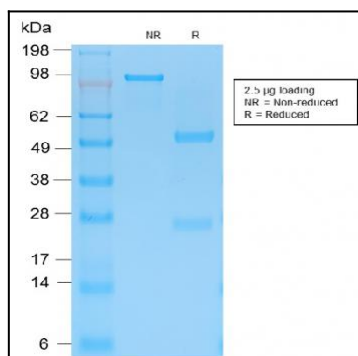


Figure 3: SDS-PAGE Analysis Purified Cytokeratin 15 Rabbit Recombinant Monoclonal Ab (KRT15/2103R).