

## 12-1204: Anti-Kappa Light Chain (B-Cell Marker) Recombinant Rabbit Monoclonal Antibody (Clone:IGKC/1999R)

<b>Clonality :</b>	Monoclonal
<b>Clone Name :</b>	IGKC/1999R
<b>Application :</b>	IHC
<b>Reactivity :</b>	Human
<b>Gene :</b>	IGKC
<b>Gene ID :</b>	3514
<b>Uniprot ID :</b>	P01601 & P01834
<b>Format :</b>	Purified
<b>Alternative Name :</b>	HCAK1; Ig Kappa Chain C Region; IGKC; Immunoglobulin KM
<b>Isotype :</b>	Rabbit IgG
<b>Immunogen Information :</b>	Recombinant full-length human Ig kappa chain

### Description

This MAb is specific to kappa light chain of immunoglobulin and shows no cross-reaction with lambda light chain or any of the five heavy chains. In mammals, the two light chains in an antibody are always identical, with only one type of light chain, kappa or lambda. The ratio of Kappa to Lambda is 70:30. However, with the occurrence of multiple myeloma or other B-cell malignancies this ratio is disturbed. Antibody to the kappa light chain is reportedly useful in the identification of leukemias, plasmacytomas, and certain non-Hodgkin's lymphomas. Demonstration of clonality in lymphoid infiltrates indicates that the infiltrate is malignant.

### Product Info

<b>Amount :</b>	20 µg / 100 µg
<b>Purification :</b>	Protein A/G
<b>Content :</b>	200µg/ml of recombinant MAb purified by Protein A/G. Prepared in 10mM PBS with 0.05% BSA & 0.05% azide. Also available WITHOUT BSA & azide at 1.0mg/ml.
<b>Storage condition :</b>	Antibody with azide - store at 2 to 8°C. Antibody without azide - store at -20 to -80°C. Antibody is stable for 24 months. Non-hazardous.

### Application Note

Immunohistochemistry (Formalin-fixed) (1-2µg/ml for 30 min at RT)(Staining of formalin-fixed tissues requires heating tissue sections in 10mM Tris with 1mM EDTA, pH 9.0, for 45 min at 95°C followed by cooling at RT for 20 minutes);

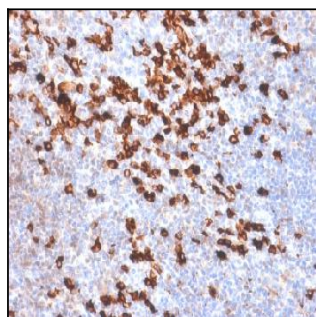


Figure 1: Formalin-fixed, paraffin-embedded human Tonsil stained with Kappa Light Chain Rabbit Recombinant Monoclonal Antibody (IGKC /1999R).

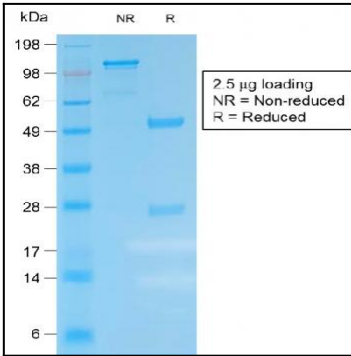


Figure 2: SDS-PAGE Analysis of Purified Kappa Lt. Chain Rabbit Recombinant Monoclonal Antibody (IGKC /1999R).

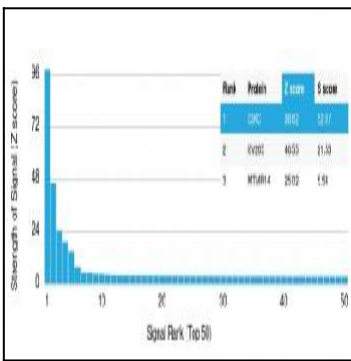


Figure 3: Analysis of Protein Array containing more than 19,000 full-length human proteins using Kappa Light Chain (IGKC) Recombinant Rabbit Monoclonal Antibody (IGKC/1999R). Z- and S- Score: The Z-score represents the strength of a signal that a monoclonal antibody (MAb) (in combination with a fluorescently-tagged anti-IgG secondary antibody) produces when binding to a particular protein on the HuProt™ array. Z-scores are described in units of standard deviations (SD's) above the mean value of all signals generated on that array. If targets on HuProt™ are arranged in descending order of the Z-score, the S-score is the difference (also in units of SD's) between the Z-score. S-score therefore represents the relative target specificity of a MAb to its intended target. A MAb is considered to specific to its intended target, if the MAb has an S-score of at least 2.5. For example, if a MAb binds to protein X with a Z-score of 43 and to protein Y with a Z-score of 14, then the S-score for the binding of that MAb to protein X is equal to 29.