

12-1203: Anti-Kappa Light Chain (B-Cell Marker) Recombinant Mouse Monoclonal Antibody (Clone:rL1C1)

Clonality :	Monoclonal
Clone Name :	rL1C1
Application :	IHC
Reactivity :	Human
Gene :	IGKC
Gene ID :	3514
Uniprot ID :	P01601 & P01834
Format :	Purified
Alternative Name :	HCAK1; Ig Kappa Chain C Region; IGKC; Immunoglobulin KM
Isotype :	Mouse IgG1, kappa
Immunogen Information :	Human B-Lymphoma Cells

Description

This MAb is specific to kappa light chain of immunoglobulin and shows no cross-reaction with lambda light chain or any of the five heavy chains. In mammals, the two light chains in an antibody are always identical, with only one type of light chain, kappa or lambda. The ratio of kappa to lambda is 70:30. However, with the occurrence of multiple myeloma or other B-cell malignancies this ratio is disturbed. Antibody to the kappa light chain is reportedly useful in the identification of leukemias, plasmacytomas, and certain non-Hodgkin's lymphomas. Demonstration of clonality in lymphoid infiltrates indicates that the infiltrate is malignant.

Product Info

Amount :	20 µg / 100 µg
Purification :	Protein A/G
Content :	200µg/ml of recombinant MAb purified by Protein A/G. Prepared in 10mM PBS with 0.05% BSA & 0.05% azide. Also available WITHOUT BSA & azide at 1.0mg/ml.
Storage condition :	Antibody with azide - store at 2 to 8°C. Antibody without azide - store at -20 to -80°C. Antibody is stable for 24 months. Non-hazardous.

Application Note

Immunohistochemistry (Formalin-fixed) (1-2µg/ml for 30 min at RT)(Staining of formalin-fixed tissues requires heating tissue sections in 10mM Tris with 1mM EDTA, pH 9.0, for 45 min at 95°C followed by cooling at RT for 20 minutes);

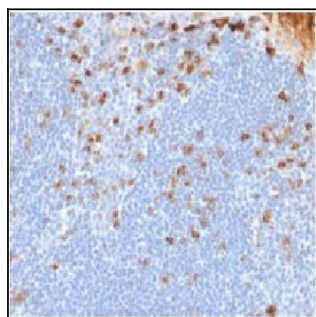


Figure 1: Formalin-fixed, paraffin-embedded human Tonsil stained with Kappa Light Chain Mouse Recombinant Monoclonal Antibody (rL1C1).

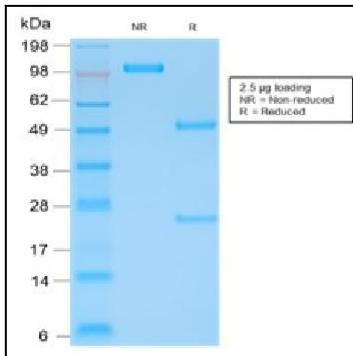


Figure 2: SDS-PAGE Analysis Purified Kappa Light Chain Mouse Recombinant Monoclonal Antibody (rLIC1).