

12-1193: Anti-HSP60 (Heat Shock Protein 60) (Mitochondrial Marker) Recombinant Rabbit Monoclonal Antibody (Clone:HSPD1/2206R)

| | |
|--------------------------------|--|
| Clonality : | Monoclonal |
| Clone Name : | HSPD1/2206R |
| Application : | WB,IHC |
| Reactivity : | Human, Mouse, Rat |
| Gene : | HSPD1 |
| Gene ID : | 3329 |
| Uniprot ID : | P10809 |
| Format : | Purified |
| Alternative Name : | 60kDa chaperonin, 60kDa heat shock protein mitochondrial, Chaperonin, 60-KD (CPN60), GROEL, HLD4, HSP65, HSPD1, HuCHA60, Mitochondrial matrix protein P1, P60 lymphocyte protein, Short heat shock protein 60 Hsp60s1, Spastic paraplegia 13 (SPG13) |
| Isotype : | Rabbit IgG, kappa |
| Immunogen Information : | Recombinant full-length human HSP60 protein |

Description

Recognizes a 60kDa protein, identified as the heat shock protein 60 (hsp60). Its epitope is localized between aa 383-447 of human hsp60. A wide variety of environmental and pathophysiological stressful conditions trigger the synthesis of a family of proteins known as heat shock proteins (hsp s), more appropriately called as stress response proteins (srp s). hsp60 is a potential antigen in a number of autoimmune diseases. In human arthritis and in experimentally induced arthritis in animals, disease development coincides with the development of immune reactivity directed against not only bacterial hsp60, but also against its mammalian homolog. Clone HSPD1/2206R, unlike LK2, recognizes only the mammalian (not bacterial) hsp60 and is useful in distinguishing hsp60 from mammals and bacteria.

Product Info

| | |
|----------------------------|---|
| Amount : | 20 µg / 100 µg |
| Purification : | Protein A/G |
| Content : | 200µg/ml of recombinant MAb purified by Protein A/G. Prepared in 10mM PBS with 0.05% BSA & 0.05% azide. Also available WITHOUT BSA & azide at 1.0mg/ml. |
| Storage condition : | Antibody with azide - store at 2 to 8°C. Antibody is stable for 24 months. ,Non-hazardous. |

Application Note

Western Blot (1-2µg/ml); ,Immunohistochemistry (Formalin-fixed) (1-2µg/ml for 30 minutes at RT),(Staining of formalin-fixed tissues requires heating tissue sections in 10mM Tris with 1mM EDTA, pH 9.0, for 45 min at 95 °C followed by cooling at RT for 20 minutes),

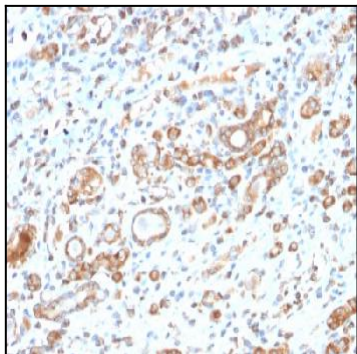


Figure 1: Formalin-fixed, paraffin-embedded human Liver stained with HSP60 Rabbit Recombinant Monoclonal Antibody (HSPD1/2206R).

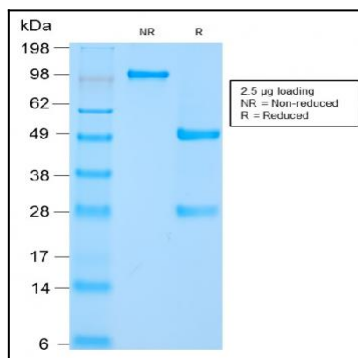


Figure 2: SDS-PAGE Analysis of Purified HSP60 Rabbit Recombinant Monoclonal Antibody (HSPD1/2206R).