

12-1181: Anti-Filaggrin (Keratinocyte Differentiation Marker) Recombinant Rabbit Monoclonal Antibody (Clone:FLG/1957R)

| | |
|--------------------------------|--|
| Clonality : | Monoclonal |
| Clone Name : | FLG/1957R |
| Application : | IHC |
| Reactivity : | Human |
| Gene : | FLG |
| Gene ID : | 2312 |
| Uniprot ID : | P20930 |
| Format : | Purified |
| Alternative Name : | ATOD2; Epidermal Filaggrin; Filaggrin; Filaggrin precursor; Fillagrin; FLG; Profilaggrin |
| Isotype : | Rabbit IgG |
| Immunogen Information : | Recombinant fragment of human Filaggrin protein (aa 198-288) (exact sequence is proprietary) |

Description

Filaggrin is an intermediate filament-associated protein that aggregates keratin intermediate filaments in mammalian epidermis. It is initially synthesized as a polyprotein precursor, profilaggrin (consisting of multiple filaggrin units of 324 aa each), which is localized in keratohyalin granules, and is subsequently proteolytically processed into individual functional filaggrin molecules. Active filaggrin is present at a level of the epidermis where keratinocytes are in transition between the live nucleated granular layer and the anucleate cornified layer, suggesting that filaggrin aids in the terminal differentiation process by facilitating apoptotic machinery.

Product Info

| | |
|----------------------------|---|
| Amount : | 20 µg / 100 µg |
| Purification : | Protein A/G |
| Content : | 200µg/ml of recombinant MAb purified by Protein A/G. Prepared in 10mM PBS with 0.05% BSA & 0.05% azide. Also available WITHOUT BSA & azide at 1.0mg/ml. |
| Storage condition : | Antibody with azide - store at 2 to 8°C. Antibody without azide - store at -20 to -80°C. Antibody is stable for 24 months. Non-hazardous. |

Application Note

Immunohistochemistry (Formalin-fixed) (1-2 µg/ml for 30 minutes at RT)(Staining of formalin-fixed tissues requires heating tissue sections in 10mM Tris with 1mM EDTA, pH 9.0, for 45 min at 95°C followed by cooling at RT for 20 minutes);

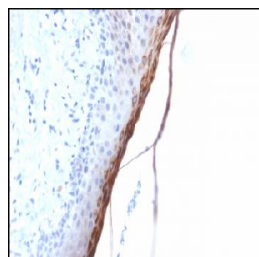


Figure 1: Formalin-fixed, paraffin-embedded human Skin stained with Filaggrin Rabbit Recombinant Monoclonal Antibody (FLG/1957R).

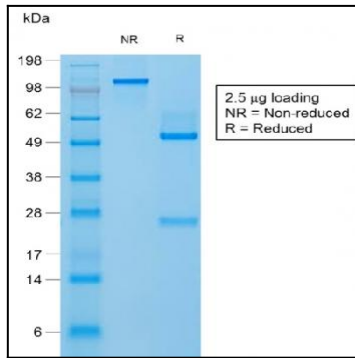


Figure 2: SDS-PAGE Analysis of Purified Filaggrin Rabbit Recombinant Monoclonal Antibody (FLG/1957R).