

12-1178: Anti-Estrogen Receptor, alpha (Marker of Estrogen Dependence) Recombinant Rabbit Monoclonal Antibody (Clone:ESR1/2299R)

Clonality :	Monoclonal
Clone Name :	ESR1/2299R
Application :	FACS,WB,IHC
Reactivity :	Human
Gene :	ESR1
Gene ID :	2099
Uniprot ID :	P03372
Format :	Purified
Alternative Name :	Estrogen Receptor alpha delta 4*5,6,7*/654 isoform; Estrogen Receptor alpha delta 4 +49 isoform; Nuclear receptor subfamily 3 group A member 1
Isotype :	Rabbit IgG, kappa
Immunogen Information :	Recombinant full-length human Estrogen Receptor alpha protein

Description

This MAb is specific to ER alpha and shows minimal cross-reaction with other members of the family. ER is an important regulator of growth and differentiation in the mammary gland. Presence of ER in breast tumors indicates an increased likelihood of response to anti-estrogen (e.g. tamoxifen) therapy. This MAb is excellent for staining of formalin-fixed, paraffin-embedded breast carcinomas.

Product Info

Amount :	20 µg / 100 µg
Purification :	Protein A/G
Content :	200µg/ml of recombinant MAb purified by Protein A/G. Prepared in 10mM PBS with 0.05% BSA & 0.05% azide. Also available WITHOUT BSA & azide at 1.0mg/ml.
Storage condition :	Antibody with azide - store at 2 to 8°C. Antibody without azide - store at -20 to -80°C. Antibody is stable for 24 months. Non-hazardous.

Application Note

Flow Cytometry (1-2 \times 10⁵µg/million cells); Western Blot (1-2 \times 10⁵µg/ml); ,Immunohistochemistry (Formalin-fixed) (1-2 \times 10⁵µg/ml for 30 minutes at RT),(Staining of formalin-fixed tissues requires heating tissue sections in 10mM Tris with 1mM EDTA, pH 9.0, for 45 min at 95 °C followed by cooling at RT for 20 minutes),

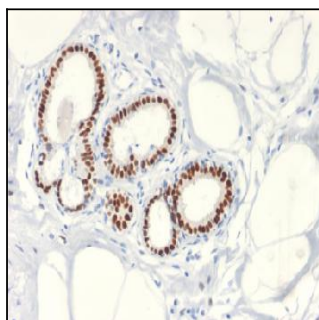


Figure 1: Formalin-fixed, paraffin-embedded human Breast Carcinoma stained with Estrogen Receptor, alpha Rabbit Recombinant Monoclonal Antibody (ESR1/2299R).

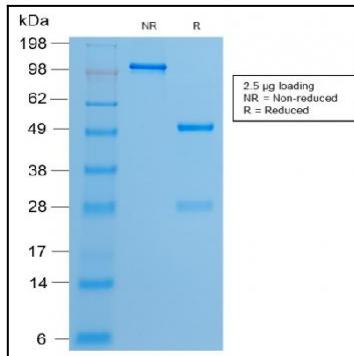


Figure 2: SDS-PAGE Analysis of Purified Estrogen Receptor, alpha Rabbit Recombinant Monoclonal Antibody (ESR1/2299R).