

## 12-1189: Anti-HCG-beta (Pregnancy & Choriocarcinoma Marker) Recombinant Rabbit Monoclonal Antibody (Clone:HCGb/1996R)

<b>Clonality :</b>	Monoclonal
<b>Clone Name :</b>	HCGb/1996R
<b>Application :</b>	IHC
<b>Reactivity :</b>	Human
<b>Gene :</b>	CGB
<b>Gene ID :</b>	1082
<b>Uniprot ID :</b>	P01233
<b>Format :</b>	Purified
<b>Alternative Name :</b>	CG-beta; CGB3; CGB5; CGB7; CGB8; Choriogonadotropin Subunit beta; hCGB
<b>Isotype :</b>	Rabbit IgG
<b>Immunogen Information :</b>	Recombinant full-length hCG beta protein

### Description

This MAb reacts with a protein of 22kDa, identified as beta sub-unit of HCG. It does not cross react with the alpha sub-unit. HCG is a glycoprotein, which is secreted in large quantities by normal trophoblasts. It is present only in trace amounts in non-pregnant urine and sera but rises sharply during pregnancy. HCG is composed of two non-identical, non-covalently linked polypeptide chains designated as the  $\alpha$  and  $\beta$  subunits. The  $\beta$  subunit is identical to that of thyroid stimulating hormone (TSH), follicle stimulating hormone (FSH), and luteinizing hormone (LH). hCG MAb detects cells and tumors of trophoblastic origin such as choriocarcinoma. Large cell carcinoma and adenocarcinoma of the lung demonstrate anti-hCG positivity in 90% and 60% of cases respectively. 20% of lung squamous cell carcinomas are positive. hCG expression by non-trophoblastic tumors may indicate aggressive behavior.

### Product Info

<b>Amount :</b>	20 $\mu$ g / 100 $\mu$ g
<b>Purification :</b>	Protein A/G
<b>Content :</b>	200 $\mu$ g/ml of recombinant MAb purified by Protein A/G. Prepared in 10mM PBS with 0.05% BSA & 0.05% azide. Also available WITHOUT BSA & azide at 1.0mg/ml.
<b>Storage condition :</b>	Antibody with azide - store at 2 to 8°C. Antibody without azide - store at -20 to -80°C. Antibody is stable for 24 months. Non-hazardous.

### Application Note

Immunohistochemistry (Formalin-fixed) (1-2 $\mu$ g/ml; 30 min RT) (Staining of formalin-fixed tissues requires heating tissue sections in 10mM Tris with 1mM EDTA, pH 9.0, for 45 min at 95°C followed by cooling at RT for 20 minutes);

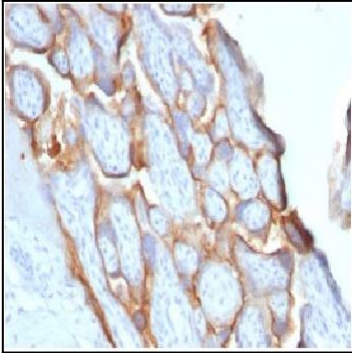


Figure 1: Formalin-fixed, paraffin-embedded Human placenta stained with HCG-beta Rabbit Recombinant Monoclonal Antibody (HCGb/1996R).

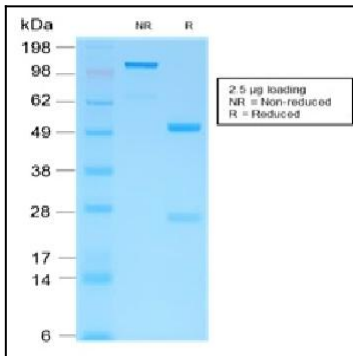


Figure 2: SDS-PAGE Analysis of Purified HCG-beta Rabbit Recombinant Monoclonal Antibody (HCGb/1996R).