

12-1188: Anti-HCG-beta (Pregnancy & Choriocarcinoma Marker) Recombinant Rabbit Monoclonal Antibody (Clone:HCGb/1985R)

Clonality :	Monoclonal
Clone Name :	HCGb/1985R
Application :	IHC
Reactivity :	Human
Gene :	CGB
Gene ID :	1082
Uniprot ID :	P01233
Format :	Purified
Alternative Name :	CG-beta; CGB3; CGB5; CGB7; CGB8; Choriogonadotropin Subunit beta; hCGB
Isotype :	Rabbit IgG
Immunogen Information :	Recombinant full-length hCG beta protein

Description

This MAb reacts with a protein of 22kDa, identified as beta sub-unit of HCG. It does not cross react with the alpha sub-unit. HCG is a glycoprotein, which is secreted in large quantities by normal trophoblasts. It is present only in trace amounts in non-pregnant urine and sera but rises sharply during pregnancy. HCG is composed of two non-identical, non-covalently linked polypeptide chains. The hCG MAb detects cells and tumors of trophoblastic origin such as choriocarcinoma. Large cell carcinoma and adenocarcinoma of the lung demonstrate anti-hCG positivity in 90% and 60% of cases respectively. 20% of lung squamous cell carcinomas are positive. hCG expression by non-trophoblastic tumors may indicate aggressive behavior.

Product Info

Amount :	20 µg / 100 µg
Purification :	Protein A/G
Content :	200µg/ml of recombinant MAb purified by Protein A/G. Prepared in 10mM PBS with 0.05% BSA & 0.05% azide. Also available WITHOUT BSA & azide at 1.0mg/ml.
Storage condition :	Antibody with azide - store at 2 to 8°C. Antibody without azide - store at -20 to -80°C. Antibody is stable for 24 months. Non-hazardous.

Application Note

Immunohistochemistry (Formalin-fixed) (1-2µg/ml; 30 min RT) (Staining of formalin-fixed tissues requires heating tissue sections in 10mM Tris with 1mM EDTA, pH 9.0, for 45 min at 95°C followed by cooling at RT for 20 minutes);

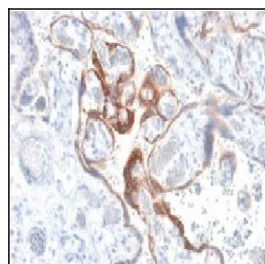


Figure 1: Formalin-fixed, paraffin-embedded Human placenta stained with hCG beta Rabbit Recombinant Monoclonal Antibody (HCGb/1985R).

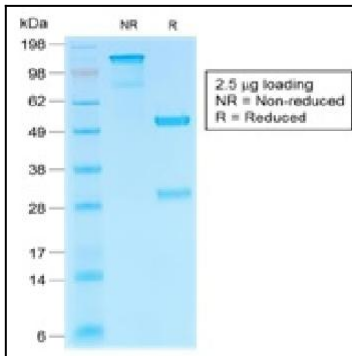


Figure 2: SDS-PAGE Analysis of Purified hCG beta Rabbit Recombinant Monoclonal Antibody (HCGb/1985R).