

## 10-7633: Rabbit Monoclonal Antibody to human CTLA-4 (Clone:ABM2D9.1G3)(Discontinued)

<b>Clonality :</b>	Monoclonal
<b>Clone Name :</b>	ABM2D9.1G3
<b>Application :</b>	FACS,WB
<b>Reactivity :</b>	Human
<b>Gene :</b>	CTLA4
<b>Gene ID :</b>	1493
<b>Uniprot ID :</b>	P16410
<b>Format :</b>	Purified
<b>Alternative Name :</b>	Cytotoxic T-lymphocyte-associated antigen 4, CTLA-4
<b>Isotype :</b>	Rabbit IgG
<b>Immunogen Information :</b>	Human CTLA-4 recombinant protein was used as the immunogen for this antibody.

### Product Info

<b>Amount :</b>	100 µg
<b>Purification :</b>	Protein G Chromatography
<b>Content :</b>	25 µg in 50 µl/100 µg in 200 µl PBS containing 0.05% BSA and 0.05% sodium azide. Sodium azide is highly toxic.
<b>Storage condition :</b>	Store the antibody at 4°C; stable for 6 months. For long-term storage; store at -20°C. Avoid repeated freeze and thaw cycles.

### Application Note

Flowcytometric Analysis: 0.5-1 µg/10<sup>6</sup> Cells

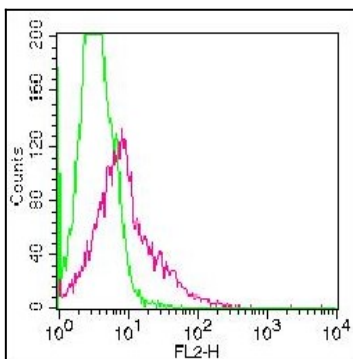


Figure 1: Cell surface staining of PHA stimulated PBMC. Green represents isotype control, red represents anti-hCTLA4 (10-7633). 0.5 µg antibody was used. Goat anti-rabbit PE was used as secondary antibody.