

10-4191-F: Rat NKG2A/C/E Monoclonal Antibody (Clone: WEN28) FITC Conjugated

Clonality :	Monoclonal
Clone Name :	WEN28
Application :	FACS
Reactivity :	Rat
Conjugate :	FITC
Gene :	NKG2A
Gene ID :	29683
Uniprot ID :	O54872
Format :	Purified
Alternative Name :	KLRC1, Killer Cell Lectin Like Receptor C1, KLRC2, Killer Cell Lectin Like Receptor C2, KLRC3, Killer Cell Lectin Like Receptor C3
Isotype :	Mouse IgG1, Kappa
Immunogen Information :	Recombinant rat NKG2A-Fc fusion protein was used as the immunogen for this antibody.

Description

Reference: Per C. Saether, Sigurd E. Hoelsbrekken, Sigbjørn Fossum and Erik Dissen, J Immunol December 15, 2011, 187 (12) 6365-6373; DOI: <https://doi.org/10.4049/jimmunol.1102345>

Product Info

Amount :	25 µg / 100 µg
Purification :	Protein G Chromatography
Content :	25 µg in 100 µl/100 µg in 500 µl Tris and 0.05% sodium azide. Sodium azide is highly toxic.
Storage condition :	Store the antibody at 4°C; stable for 6 months.

Application Note

Flow cytometric analysis: 2-4 µg/10⁶

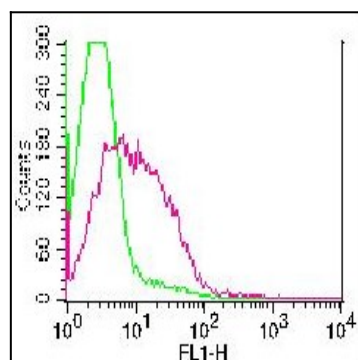


Figure-1: Cell surface staining of rat splenocytes. Green: FITC conjugated isotype control. Red: FITC conjugated Anti-rat NKG2a (10-4191F). 5 µg antibody was used.