

## 10-7649: Monoclonal Antibody to Mouse PD-L2 (Clone: Ty25)

<b>Clonality :</b>	Monoclonal
<b>Clone Name :</b>	Ty25
<b>Application :</b>	FACS,WB
<b>Reactivity :</b>	Mouse
<b>Gene :</b>	Pdcd1lg2
<b>Gene ID :</b>	58205
<b>Uniprot ID :</b>	Q9WUL5
<b>Format :</b>	Purified
<b>Alternative Name :</b>	Programmed cell death 1 ligand 2, Programmed death ligand 2, Programmed death ligand 2, B7-DC, CD273, PDCD1 ligand 2
<b>Isotype :</b>	Rat IgG2a, Kappa
<b>Immunogen Information :</b>	Mouse PD-L2 transfected cell line was used as the immunogen for this antibody.

### Product Info

<b>Amount :</b>	25 µg / 100 µg
<b>Purification :</b>	Protein G Chromatography
<b>Content :</b>	25 µg in 50 µl/100 µg in 200 µl PBS containing 0.05% BSA and 0.05% sodium azide. Sodium azide is highly toxic.
<b>Storage condition :</b>	Store the antibody at 4°C; stable for 6 months. For long-term storage; store at -20°C. Avoid repeated freeze and thaw cycles.

### Application Note

Flowcytometric Analysis: 0.2-0.4 µg/10<sup>6</sup> Cells

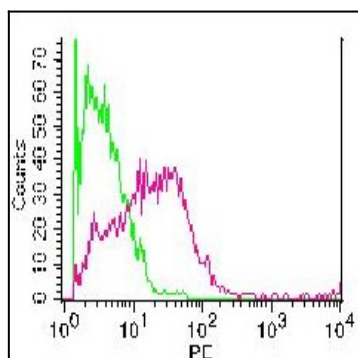


Figure 1: Cell surface staining of splenocytes stimulated with ConA + mIL2 for 3 days. Green represents Rat isotope control, red represents Anti-mouse PD-L2 (10-7649). 0.2 µg antibodies were used. Goat anti-rat PE was used as secondary antibody.