

## 10-4195: Monoclonal Antibody to CD37 (Clone: HH1)

<b>Clonality :</b>	Monoclonal
<b>Clone Name :</b>	HH1
<b>Application :</b>	IHC,FACS
<b>Reactivity :</b>	Human
<b>Gene :</b>	CD37
<b>Gene ID :</b>	951
<b>Uniprot ID :</b>	P11049
<b>Format :</b>	Purified
<b>Alternative Name :</b>	Leukocyte antigen CD37, Tetraspanin-26, Tspan-26
<b>Isotype :</b>	IgG1 Kappa

### Description

CD37 is an internalizing B-cell antigen expressed on Non-Hodgkin lymphoma (NHL) and chronic lymphocytic leukemia cells (CLL).

### Product Info

<b>Amount :</b>	25 µg / 100 µg
<b>Purification :</b>	Protein G Chromatography
<b>Content :</b>	25 µg in 50 µl/100 µg in 200 µl PBS containing 0.05% BSA and 0.05% sodium azide. Sodium azide is highly toxic.
<b>Storage condition :</b>	Store the antibody at 4°C; stable for 6 months. For long-term storage; store at -20°C. Avoid repeated freeze and thaw cycles

### Application Note

Flowcytometry Analysis: 0.5 -1 µg

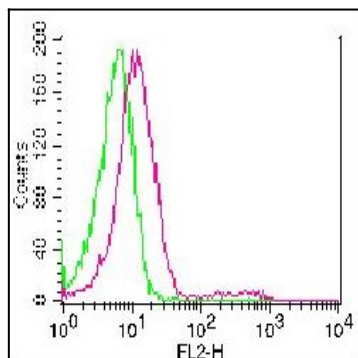


Fig. 1: Cell surface staining of PBMC (lymphocytes gated). Green represents Isotype control (ABEOMICS). Red represents Anti-CD37 clone HH1 (10-4195). 0.5 µg antibodies were used. Goat-anti mouse PE was used as secondary antibody (ABEOMICS).