

10-7501: Monoclonal antibody to TEM7 (Clone: ABM1D82)

Clonality :	Monoclonal
Clone Name :	ABM1D82
Application :	WB
Reactivity :	Human
Gene :	PLXDC1
Gene ID :	57125
Uniprot ID :	Q8IUUK5
Format :	Purified
Alternative Name :	Tumor endothelial marker 3, Tumor endothelial marker 7, TEM3
Isotype :	Mouse IgG2b, Kappa
Immunogen Information :	A partial length recombinant protein of TEM7 (amino acid 270-480) was used as the immunogen for this antibody.

Product Info

Amount :	25 µg / 100 µg
Purification :	Protein G Chromatography
Content :	25 µg in 50 µl/100 µg in 200 µl PBS containing 0.05% BSA and 0.05% sodium azide. Sodium azide is highly toxic.
Storage condition :	Store the antibody at 4°C, stable for 6 months. For long-term storage, store at -20°C. Avoid repeated freeze and thaw cycles.

Application Note

Recommended dilutions: WB: 2-4 µg/ml. However, this need to be optimized based on the research applications.

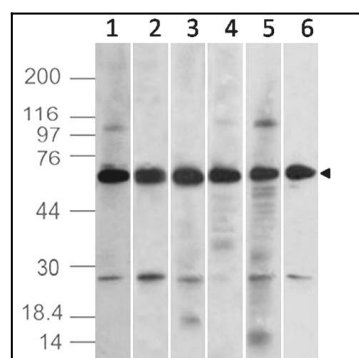


Figure-1: Western blot analysis of TEM7. Anti-TEM7 antibody (Clone: ABM1D82) was used at 2 µg/ml on (1) BT474, (2) MCF-7, (3) SKBR3, (4) A549, (5) Jurkat and (6) HepG2 lysates.