

10-8005: Monoclonal antibody to KCHIP1 (Clone: ABM20A1)

Clonality :	Monoclonal
Clone Name :	ABM20A1
Application :	WB
Reactivity :	Human
Conjugate :	Unconjugated
Gene :	KCNIP1
Gene ID :	30820
Uniprot ID :	Q9NZI2
Format :	Purified
Alternative Name :	Kv channel-interacting protein 1, A-type potassium channel modulatory protein 1, Potassium channel-interacting protein 1, Vesicle APC-binding protein
Isotype :	Mouse IgG1 Kappa
Immunogen Information :	Full length recombinant protein of KCHIP1 was used as the immunogen for this antibody.

Product Info

Amount :	25 µg / 100 µg
Purification :	Protein G Chromatography
Content :	25 µg in 50 µl/100 µg in 200 µl PBS containing 0.05% BSA and 0.05% sodium azide. Sodium azide is highly toxic.
Storage condition :	Store the antibody at 4°C, stable for 6 months. For long-term storage, store at -20°C. Avoid repeated freeze and thaw cycles.

Application Note

Western blot analysis: 2-4 µg/ml

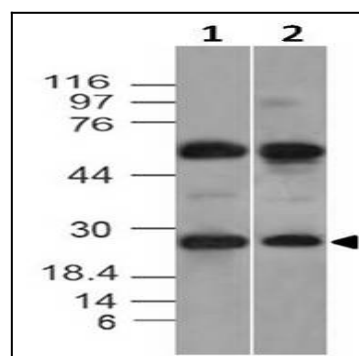


Figure-1: Western blot analysis of KCHIP1. Anti- KCHIP1 antibody (Clone: ABM20A1) was tested at 2 µg/ml on (1) h Liver and (2) h Kidney tissue lysates.