

10-4187-F: Monoclonal Antibody to CD24 (Clone: ML5) FITC Conjugated

Clonality :	Monoclonal
Clone Name :	ML5
Application :	FACS
Reactivity :	Human
Conjugate :	FITC
Gene :	CD24
Gene ID :	100133941
Uniprot ID :	P25063
Format :	Purified
Alternative Name :	Signal transducer CD24, Small cell lung carcinoma cluster 4 antigen
Isotype :	Mouse IgG2a Kappa
Immunogen Information :	Full length CD24 protein was used as the immunogen for this antibody.

Product Info

Amount :	100 µg
Purification :	Protein G Chromatography
Content :	25 µg in 125 µl/100 µg in 500 µl Tris containing and 0.05% sodium azide. Sodium azide is highly toxic.
Storage condition :	Store the antibody at 4°C, stable for 6 months.

Application Note

Flowcytometric analysis: 0.5-1/µg/10⁶ Cells

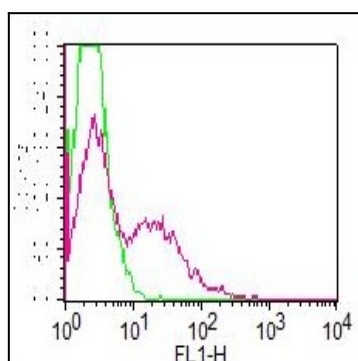


Figure-1: Cell surface flow cytometric analysis of CD24 in PBMC (Lymphocytes gated) using 0.5 µg/10⁶ Cells. Green represent FITC conjugated isotype control (Abeomics) and red represent FITC conjugated Anti-CD24 (10-4187F).