

10-7631: Monoclonal antibody to PDL2 (Clone: ABM3D6.1G2)

Clonality :	Monoclonal
Clone Name :	ABM3D6.1G2
Application :	IHC,WB
Reactivity :	Mouse,Human
Gene :	PDCD1LG2
Gene ID :	80380
Uniprot ID :	Q9BQ51
Format :	Purified
Alternative Name :	Butyrophilin B7-DC, CD273, B7DC, PDCD1L2
Isotype :	Mouse IgG2b, Kappa
Immunogen Information :	A partial length recombinant PDL2 protein was used as the immunogen for this antibody.

Product Info

Amount :	25 µg / 100 µg
Purification :	Protein G Chromatography
Content :	25 µg in 50 µl/100 µg in 200 µl PBS containing 0.05% BSA and 0.05% sodium azide. Sodium azide is highly toxic.
Storage condition :	Store the antibody at 4°C; stable for 6 months. For long-term storage; store at -20°C. Avoid repeated freeze and thaw cycles.

Application Note

Recommended dilutions: Western blot analysis: 4-6 µg/ml, Immunohistochemical analysis-2-4 µg/ml. However, this need to be optimized based on the research applications.

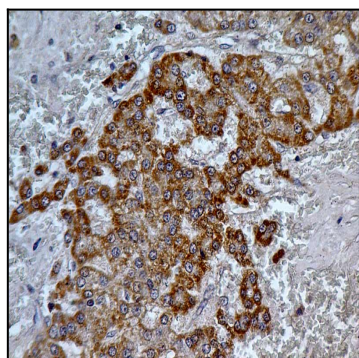


Figure-1: Immunohistochemical analysis of PDL2 in Hepatocellular carcinoma tissue using PDL2 antibody (Clone: ABM3D6.1G2) at 5 µg/ml.

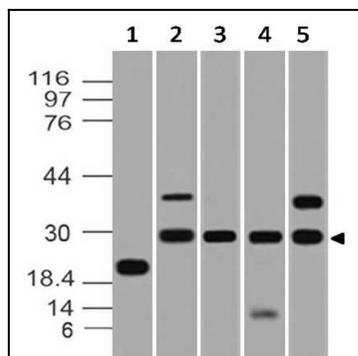


Figure-2: Western blot analysis of PDL2. Anti-PDL2 antibody (Clone: ABM3D6.1G2) was tested at 0.01 $\mu\text{g/ml}$ on (1) Recombinant protein and 4 $\mu\text{g/ml}$ on (2) U87, (3) Raji, (4) THP1 and (5) RAW Lysates.