

10-4186: Monoclonal Antibody to CD24 (Clone: ML1)

Clonality :	Monoclonal
Clone Name :	ML1
Application :	IHC,FACS
Reactivity :	Human
Conjugate :	Unconjugated
Gene :	CD24
Gene ID :	100133941
Uniprot ID :	P25063
Format :	Purified
Alternative Name :	Signal transducer CD24, Small cell lung carcinoma cluster 4 antigen
Isotype :	IgG3

Description

The antigen is CD24 with a molecular weight of 35 - 45kD. The epitope has not been further characterized. Antigen distribution: Isolated cells: granulocytes. Tissue sections: B-cells (germinal centers weak); follicular dendritic cells; variety of epithelial cell types.

Product Info

Amount :	25 µg / 100 µg
Purification :	Protein G Chromatography
Content :	25 µg in 50 µl/100 µg in 200 µl PBS containing 0.05% BSA and 0.05% sodium azide. Sodium azide is highly toxic.
Storage condition :	Store the antibody at 4°C, stable for 6 months. For long-term storage, store at -20°C. Avoid repeated freeze and thaw cycles.

Application Note

Flowcytometric Analysis: 0.5-1 µg/10⁶ Cells

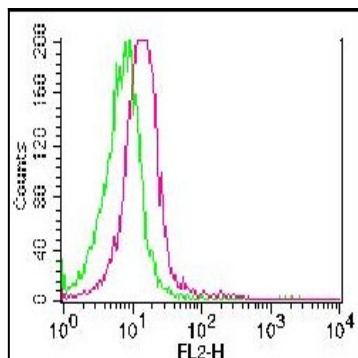


Fig. 1: Cell surface staining of PBMC (lymphocytes gated). Green represents Isotype control (ABEOMICS). Red represents Anti-CD24 clone ML-1 (10-4186). 1.0 µg antibodies were used. Goat-anti mouse PE was used as secondary antibody (ABEOMICS).