

10-4187: Monoclonal Antibody to CD24 (Clone: ML5)

Clonality :	Monoclonal
Clone Name :	ML5
Application :	IHC,FACS
Reactivity :	Human
Conjugate :	Unconjugated
Gene :	CD24
Gene ID :	100133941
Uniprot ID :	P25063
Format :	Purified
Alternative Name :	Signal transducer CD24, Small cell lung carcinoma cluster 4 antigen
Isotype :	Mouse IgG2a Kappa
Immunogen Information :	Full length CD24 protein was used as the immunogen for this antibody.

Description

The antigen is CD24 with a molecular weight of 35 - 45kD. The epitope has not been further characterized. Antigen distribution: Isolated cells: granulocytes. Tissue sections: B-cells (germinal centers weak); follicular dendritic cells; variety of epithelial cell types.

Product Info

Amount :	25 µg / 100 µg
Purification :	Protein G Chromatography
Content :	25 µg in 50 µl/100 µg in 200 µl PBS containing 0.05% BSA and 0.05% sodium azide. Sodium azide is highly toxic.
Storage condition :	Store the antibody at 4°C, stable for 6 months. For long-term storage, store at -20°C. Avoid repeated freeze and thaw cycles.

Application Note

Flowcytometric analysis: 0.5-1/µg/10⁶ Cells, Immunohistochemical analysis : 5-10 µg/ml

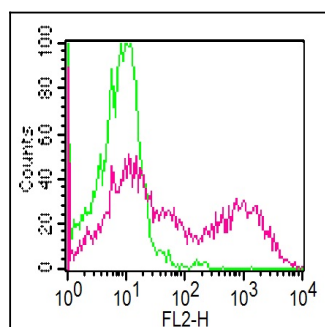


Figure-1: Cell surface flowcytometric analysis of CD24 in human PBMC (Lymphocytes) using 0.5 µg/10⁶ Cells of Anti- CD24 antibody (Clone: ML5). Green represent isotype control and red represent Anti CD24 (10-4187 ABEOMICS). Goat Anti-mouse PE conjugate was used as the secondary antibody.

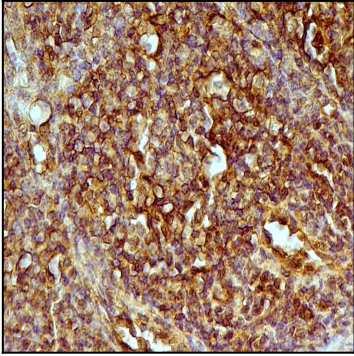


Figure-2: Immunohistochemical analysis of CD24 in Human Tonsil tissue using Anti-CD24 antibody (Clone: ML5) at 5 μ g/ml.