

## 45-1120: Biotinylated Mouse Monoclonal Antibody to Human C-reactive protein (Clone : 8B11) (Discontinued)

<b>Clonality :</b>	Monoclonal
<b>Clone Name :</b>	8B11
<b>Application :</b>	ELISA
<b>Conjugate :</b>	Biotin
<b>Format :</b>	Purified
<b>Isotype :</b>	Mouse IgG1,Kappa
<b>Immunogen Information :</b>	Human CRP

### Description

C-reactive protein (CRP) is an annular, pentameric protein found in blood plasma, in which the levels rise in response to inflammation. It is an acute-phase protein synthesized by the liver that increases following interleukin-6 secretion by macrophages and T cells. CRP binds to the phosphocholine expressed on the surface of dead or dying cells and some bacteria. This activates the complement system, promoting phagocytosis by macrophages, which clears necrotic and apoptotic cells and bacteria.

### Product Info

<b>Amount :</b>	40 µg
<b>Purification :</b>	Protein A chromatography
<b>Content :</b>	0.5 mg/ml, lyophilized with PBS, pH 7.4, containing 1% BSA and 0.02% sodium azide.
<b>Storage condition :</b>	The antibody is stable in lyophilized form if stored at -20°C or below. The reconstituted antibody can be stored for 2-3 weeks at 2-8°C. For long term storage, aliquot and store at -20°C or below. Avoid repeated freezing and thawing cycles.

### Application Note

ELISA detection: 0.02-0.2 µg/ml  
Western blot: 1-2 µg/ml

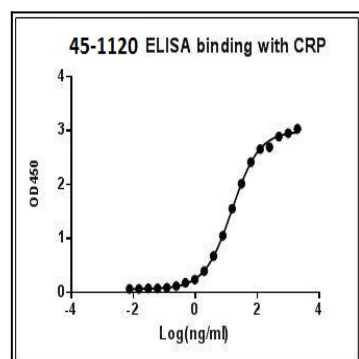


Figure-1 : ELISA binding of Biotin conjugated CRP Antibody (Clone: 8B11) with Human CRP, Coating antigen: Human CRP at 1 µg/ml, Human CRP antibody dilution start from 2000 ng/ml, EC50=15.32 ng/ml

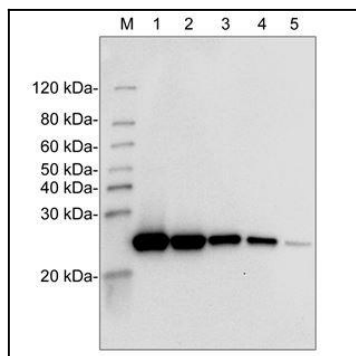


Figure-2 : Western blot analysis of Biotin conjugated CRP Antibody (Clone: 8B11) at 1  $\mu$ g/ml on Human CRP protein (1-5: 100 ng, 50 ng, 10 ng, 5 ng & 1 ng respectively), Streptavidin-HRP was used as Secondary antibody at 0.2  $\mu$ g/ml.