

45-1104: Mouse Monoclonal Antibody to Human RPL17 (Clone : 6H11E8)(Discontinued)

Clonality :	Monoclonal
Clone Name :	6H11E8
Application :	ELISA
Reactivity :	Human
Gene :	RPL17
Gene ID :	6139
Uniprot ID :	P18621
Format :	Purified
Alternative Name :	60S ribosomal protein L17, 60S ribosomal protein L23, gene encoding putative NFkB activating protein, Large ribosomal subunit protein uL22, MGC117162, PD-1, ribosomal protein L17, RPL17, rpL23
Isotype :	Mouse IgG2b,k
Immunogen Information :	Recombinant Human RPL17

Description

Ribosomes, the organelles that catalyze protein synthesis, consist of a small 40S subunit and a large 60S subunit. These subunits are composed of 4 RNA species and approximately 80 structurally distinct proteins. RPL17 encodes a ribosomal protein that is a component of the 60S subunit. The protein belongs to the L22P family of ribosomal proteins. It is located in the cytoplasm. Among its related pathways are Metabolism and Viral mRNA Translation. As it is typical for genes encoding ribosomal proteins, there are multiple processed pseudogenes of this gene dispersed through the genome. Alternative splicing results in multiple transcript variants. Human RPL17 Antibody (6H11E8), mAb, Mouse is produced from a hybridoma resulting from the fusion of SP2/0 myeloma and B-lymphocytes obtained from a mouse immunized with recombinant human RPL17.

Product Info

Amount :	40 µg
Purification :	Protein A chromatography
Content :	0.5 mg/ml, lyophilized with PBS, pH 7.4, containing 0.02% sodium azide.
Storage condition :	The antibody is stable in lyophilized form if stored at -20°C or below. The reconstituted antibody can be stored for 2-3 weeks at 2-8°C. For long term storage, aliquot and store at -20°C or below. Avoid repeated freezing and thawing cycles.

Application Note

ELISA detection: 0.01-0.1 µg/ml
Immunofluorescence: 2-10 µg/ml
Western blot: 1-2 µg/ml

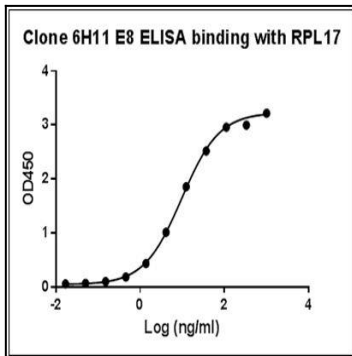


Figure-1 : ELISA binding of RPL17 Antibody (Clone: 6H11E8) with Human RPL17 recombinant protein, Coating antigen: RPL17 at 1 μ g/ml, RPL17 antibody dilution start from 1000 ng/ml, EC50= 8.766 ng/ml

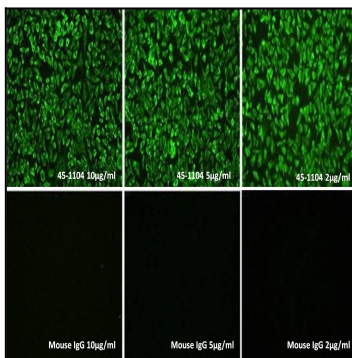


Figure-2 : Immunofluorescence staining of Human RPL17 Antibody (Clone: 6H11E8) on 1) RPL17 in Hela cells at (10 $\hat{1}/4$ g/ml, 5 $\hat{1}/4$ g/ml & 2 $\hat{1}/4$ g/ml), 2) mouse IgG at (10 $\hat{1}/4$ g/ml, 5 $\hat{1}/4$ g/ml or 2 $\hat{1}/4$ g/ml). FITC conjugated Goat Anti-Mouse IgG Antibody (H&L) was used as Secondary Antibody at 5 $\hat{1}/4$ g/ml.

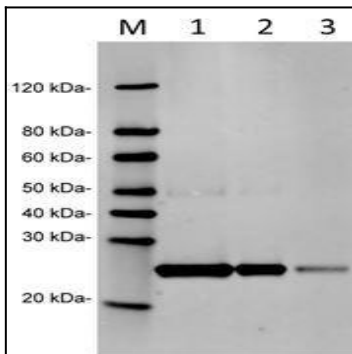


Figure-3 : Western Blot analysis of Human RPL17 Antibody (Clone: 6H11E8) at 1 $\hat{1}/4$ g/ml on Human RPL17 recombinant protein (1-3: 50 ng, 25 ng & 10 ng).IRDye 800 conjugated Goat anti-Mouse IgG was used as Secondary Antibody at 0.125 $\hat{1}/4$ g/ml.

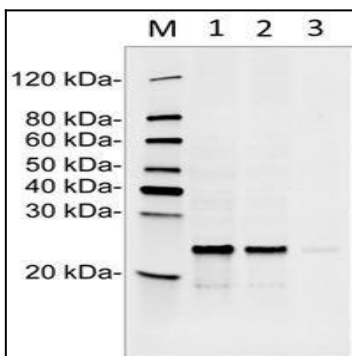


Figure-4 : Western Blot analysis of Human RPL17 Antibody (Clone: 6H11E8) at 1 $\hat{1}/4$ g/ml, on Hela cell lysates 1-3: 100 $\hat{1}/4$ g, 50 $\hat{1}/4$ g & 10 $\hat{1}/4$ g respectively.

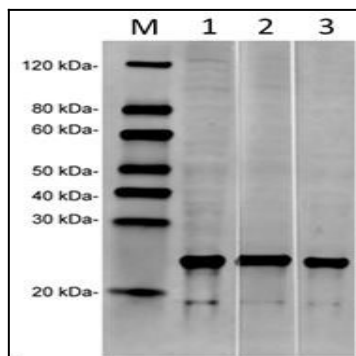


Figure-5 : Western Blot analysis of Human RPL17 Antibody (Clone: 6H11E8) on HeLa cell lysates (50 μ g) at 1-3: 5 μ g/ml, 1 μ g/ml & 0.5 μ g/ml respectively, IRDye 800 conjugated Goat anti-Mouse IgG was used as Secondary Antibody at 0.125 μ g/ml.

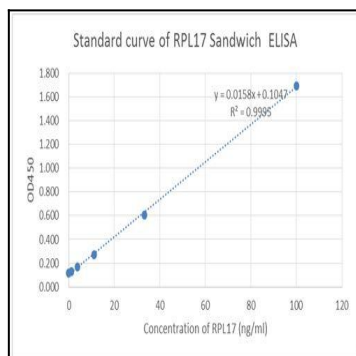


Figure-6 :Standard curve of RPL17 Sandwich ELISA. The RPL17 Sandwich ELISA assay is developed by using Human RPL17 Antibody (Clone: 15B3F5) and Biotin conjugated Human RPL17 Antibody (Clone: 6H11E8) as capture and detect antibody, respectively. The sensitivity is <1 ng/ml and the detection range is 0-100 ng/ml.