

45-1101: Mouse Monoclonal Antibody to Human LAG3 (Clone : LG.B5) (Discontinued)

Clonality :	Monoclonal
Clone Name :	LG.B5
Application :	ELISA
Gene :	LAG3
Gene ID :	3902
Uniprot ID :	P18627
Format :	Purified
Alternative Name :	CD223, LAG-3, Ly66, Lymphocyte activation gene 3 protein, lymphocyte-activation gene 3, Protein FDC
Isotype :	Mouse IgG1,Kappa
Immunogen Information :	Recombinant human LAG3-Fc

Description

LAG-3 (Lymphocyte activation gene-3), designated CD223, is a 70 kDa type I transmembrane protein that is a member of the immunoglobulin superfamily (IgSF). LAG-3 is expressed on activated CD4+ and CD8+ T cells, NK cells, and plasmacytoid dendritic cells (pDC), but not on resting T cells. LAG-3 on activated CD4+CD25+ Treg cells plays a role in their suppressive activity. LAG-3 limits the expansion of activated T cells and pDC in response to selected stimuli. In mice, deletion of LAG-3 and another negative regulator, PD-1, facilitates anti-cancer response but also blocks self-tolerance and increases susceptibility to autoimmune diseases. In humans, antibody-mediated down-regulation of LAG-3 and PD-1 allows more effective control of chronic malaria, while in NOD (non-obese diabetic) mice, deletion of LAG-3 alone accelerates diabetes. Human LAG3 Antibody (LG.B5), mAb, Mouse is produced from a hybridoma resulting from the fusion of SP2/0 myeloma and B-lymphocytes obtained from a mouse immunized with Recombinant human LAG3-Fc.

Product Info

Amount :	40 µg
Purification :	Protein A chromatography
Content :	0.5 mg/ml, lyophilized with PBS, pH 7.4, containing 0.02% sodium azide.
Storage condition :	The antibody is stable in lyophilized form if stored at -20°C or below. The reconstituted antibody can be stored for 2-3 weeks at 2-8°C. For long term storage, aliquot and store at -20°C or below. Avoid repeated freezing and thawing cycles.

Application Note

ELISA detection: 0.01-0.1 µg/ml
Flow cytometry: 5-7 µg/ml

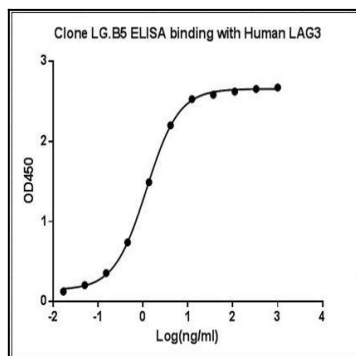


Figure-1 : ELISA binding of LAG3 Antibody (Clone: LG.B5) with Recombinant human LAG3-Fc, Coating antigen: Recombinant human LAG3-Fc at 0.5 $\mu\text{g/ml}$, LAG3 antibody dilution start from 1000 ng/ml, EC50= 1.203 ng/ml.

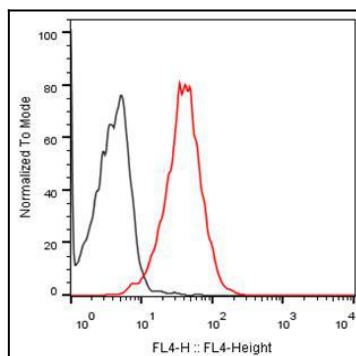


Figure-2 : Flow cytometric analysis of CHO-K1/LAG3 stable cell expressing LAG3 binding with Human LAG3 Antibody (Clone: LG.B5), Antibody concentration: 5 $\mu\text{g/ml}$, 2.5×10^6 cells/reaction. iFluor647 conjugated Goat Anti-Mouse IgG used as Secondary Antibody.