

## 45-1098: Mouse Monoclonal Antibody to Human CD38 (Clone : 38.H1) (Discontinued)

<b>Clonality :</b>	Monoclonal
<b>Clone Name :</b>	38.H1
<b>Application :</b>	ELISA
<b>Gene :</b>	CD38
<b>Gene ID :</b>	952
<b>Uniprot ID :</b>	P28907
<b>Format :</b>	Purified
<b>Alternative Name :</b>	2'-phospho-ADP-ribosyl cyclase, 2'-phospho-cyclic-ADP-ribose transferase, ADP-ribosyl cyclase cyclic ADP-ribose hydrolase, cyclic ADP-ribose hydrolase ADPRC cADPr hydrolase CD38, CD38 antigen (p45), CD38 antigen p45, cluster of differentiation 38, Cyclic ADP-ribose hydrolase cyclic ADP-ribose hydrolase 5, ecto-nicotinamide adenine dinucleotide glycohydrolase, NAD(+) nucleosidase, NAD+ nucleosidase, T10
<b>Isotype :</b>	Mouse IgG2b,Kappa
<b>Immunogen Information :</b>	Recombinant human CD38

### Description

CD38 glycoprotein is a particularly attractive target on malignant plasma cells at all stages of disease and in Chronic lymphocytic leukemia (also called CLL) patients with a poor clinical prognosis. It is highly expressed in lymphoid tumors including multiple myeloma, AIDS-associated lymphomas, and post-transplant lymphoproliferation. In contrast, the molecule is detectable only at very low levels in mature lymphocytes or in nonhematopoietic tissues. Therapeutic Anti-CD38 antibodies (e.g. Daratumumab) can induce strong antibody-dependent cellular cytotoxicity and complement-dependent cytotoxicity to kill tumors. Human CD38 Antibody (38.H1), mAb, Mouse is produced from a hybridoma resulting from the fusion of SP2/0 myeloma and B-lymphocytes obtained from a mouse immunized with recombinant human CD38.

### Product Info

<b>Amount :</b>	40 µg
<b>Purification :</b>	Protein A chromatography
<b>Content :</b>	0.5 mg/ml, lyophilized with PBS, pH 7.4, containing 0.02% sodium azide.
<b>Storage condition :</b>	The antibody is stable in lyophilized form if stored at -20°C or below. The reconstituted antibody can be stored for 2-3 weeks at 2-8°C. For long term storage, aliquot and store at -20°C or below. Avoid repeated freezing and thawing cycles.

### Application Note

ELISA detection: 0.01-0.1 µg/ml  
Flow cytometry: 5-7 µg/ml

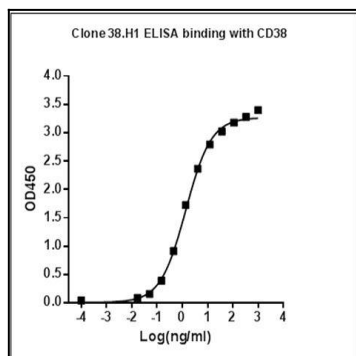


Figure-1 : ELISA binding of CD38 antibody (Clone: 38.H1) with Human CD38 recombinant protein, Coating antigen: Human CD38 recombinant protein at 1 µg/ml, CD38 antibody dilution start from 1000 ng/ml, EC<sub>50</sub>= 1.38 ng/ml.

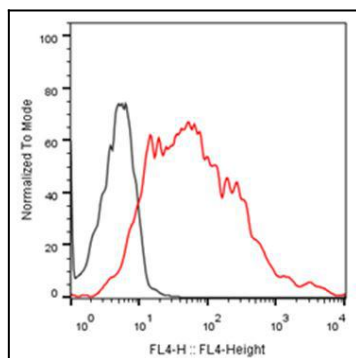


Figure-2 : Flow cytometric analysis of CD38 Antibody (Clone: 38.H1) on CHO-K1/Human CD38 stable cell line expressing CD38 (Red histogram) and CHO negative control cell (Black histogram) at 5 µg/ml, 2.5x10<sup>5</sup> µ cells/reaction, iFluor647 conjugated Goat Anti-Mouse IgG used as Secondary Antibody.