

45-1092: Mouse Monoclonal Antibody to Human VISTA (Clone : VA.F6) (Discontinued)

Clonality :	Monoclonal
Clone Name :	VA.F6
Application :	ELISA
Gene :	VSIR
Gene ID :	64115
Uniprot ID :	Q9H7M9
Format :	Purified
Alternative Name :	VSIR/V-set immunoregulatory receptor/B7H5/ GI24/ B7-H5/ PD-1H/ SISP1/ PP2135/ C10orf54/ DD1alphaPDCD1 Homolog/V-Set Domain-Containing Immunoregulatory Receptor/V-Domain Ig Suppressor Of T Cell Activation / Chromosome 10 Open Reading Frame 54/Stress-Induced Secreted Protein-1/Stress Induced Secreted Protein 1/ Platelet Receptor GI24/ Platelet Receptor Gi24 / Death Domain1alpha
Isotype :	Mouse IgG2a,Kappa
Immunogen Information :	Recombinant human VISTA-Fc

Description

VISTA is a negative immune checkpoint regulator that suppresses T-cell activation, and highly expressed on hematopoietic cells and within the tumor microenvironment. By analogy to VISTA and PD-L1 blockade, VISTA blockade may offer an immunotherapeutic strategy for human cancer. Therapeutic antibody against VISTA activates T cell signal and offers a way to promote this blockade. Human VISTA Antibody (VA.F6), mAb, Mouse is produced from a hybridoma resulting from the fusion of SP2/0 myeloma and B-lymphocytes obtained from a mouse immunized with recombinant human VISTA.

Product Info

Amount :	40 µg
Purification :	Protein A chromatography
Content :	0.5 mg/ml, lyophilized with PBS, pH 7.4, containing 0.02% sodium azide.
Storage condition :	The antibody is stable in lyophilized form if stored at -20°C or below. The reconstituted antibody can be stored for 2-3 weeks at 2-8°C. For long term storage, aliquot and store at -20°C or below. Avoid repeated freezing and thawing cycles.

Application Note

ELISA detection: 0.01-0.1 µg/ml

Flow cytometry: 5-7 µg/ml

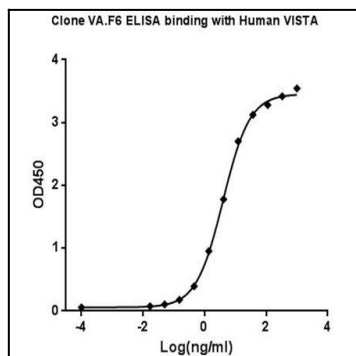


Figure-1 : ELISA binding of VISTA antibody (Clone: VA.F6) with Human VISTA recombinant protein, Coating antigen: VISTA-Fc at 1 $\mu\text{g/ml}$, VISTA antibody dilution start from 1000 ng/ml, $\text{EC}_{50}=3.953$ ng/ml.

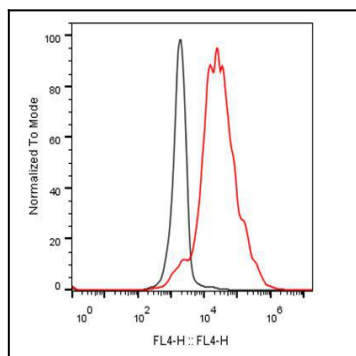


Figure-2 : Flow cytometric analysis of VISTA Antibody (Clone: VA.F6) on CHO-K1/VISTA stable cell line (Red histogram) at 5 $\mu\text{g/ml}$, 2.5×10^6 cells/reaction. Black histogram represents CHO negative control cell. iFluor647 conjugated Goat Anti-Mouse IgG used as Secondary Antibody.