

## 45-1089: Rabbit Monoclonal Antibody to His Tag (C-term) (Clone : 25B6E11)

<b>Clonality :</b>	Monoclonal
<b>Clone Name :</b>	25B6E11
<b>Application :</b>	IP,ELISA,ICC/IF,FACS,WB
<b>Format :</b>	Purified
<b>Isotype :</b>	Rabbit IgG
<b>Immunogen Information :</b>	6x His synthetic peptide coupled to KLH

### Description

The rabbit immune system generates antibody diversity and optimizes affinity. technology to generate high affinity and specific monoclonal rabbit antibodies. Anti-His Tag (C-term) Antibody (25B6E11), mAb, Rabbit is specific to six histidine tags placed at C-terminal and internal regions of fusion proteins. This antibody can greatly improve the effectiveness of several different kinds of immunoassays, helping researchers identify, detect, and purify polyhistidine fusion proteins in bacteria, insect cells, and mammalian cells. This product is not recommended for N-terminal His-fusion protein detection.

### Product Info

<b>Amount :</b>	40 µg
<b>Purification :</b>	Protein A chromatography
<b>Content :</b>	lyophilized with PBS, pH 7.4, containing 0.02% sodium azide. Reconstitute with deionized water or equivalent to 0.5 mg/ml.
<b>Storage condition :</b>	The antibody is stable in lyophilized form if stored at -20°C or below. The reconstituted antibody can be stored for 2-3 weeks at 2-8°C. For long term storage, aliquot and store at -20°C or below. Avoid repeated freezing and thawing cycles.

### Application Note

ELISA: 0.05-0.2 µg/ml  
Western Blot: 1-2 µg/ml  
Immunoprecipitation (IP): 2 µg/ml  
Immunocytochemistry/Immunofluorescence (ICC/IF): 1 µg/ml  
Flow Cytometry: 1 µg/ml

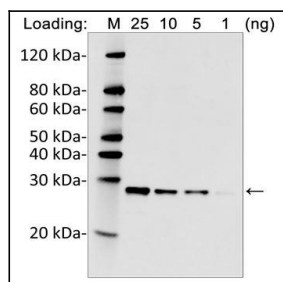


Figure-1 : Western blot analysis of His Tag (C-term) Antibody (Clone: 25B6E11) at 0.2 µg/ml on 6xHis-tag Fusion Protein, IRDye 800 conjugated Goat anti-rabbit IgG (H&L) was used as secondary Antibody at 0.125 µg/ml.

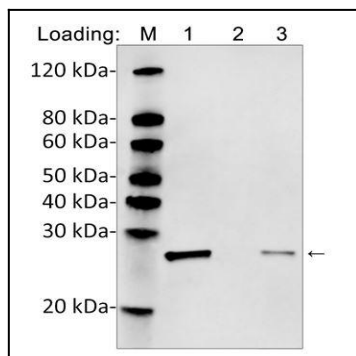


Figure-2 : Western blot analysis of His Tag (C-term) Antibody (Clone: 25B6E11) at 0.2  $\mu\text{g/ml}$  on immunoprecipitation from cell lysates containing His fusion protein, 1: His antibody (4  $\mu\text{g}$ ) + His tagged fusion protein, 2: Rabbit IgG (4  $\mu\text{g}$ ) + His tagged fusion protein, 3: His tagged fusion protein (Input), IRDye 800 Conjugated Goat anti-rabbit IgG (H&L) was used secondary antibody at 0.125  $\mu\text{g/ml}$ .

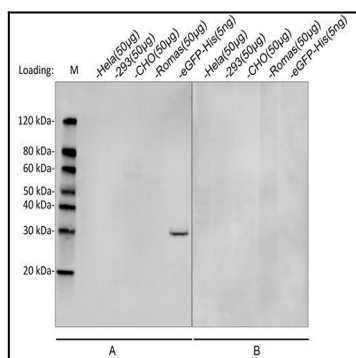


Figure-3 : Western blot analysis of cross-reactivity of His Tag (C-term) Antibody (Clone: 25B6E11) at 1  $\mu\text{g/ml}$  on cell lysates, A: His Tag Antibody (Clone:25B6E11), B: Rabbit IgG (as Negative control), IRDye 800 Conjugated Goat anti-rabbit IgG (H&L) was used as secondary antibody at 0.125  $\mu\text{g/ml}$ .