

45-1082: Mouse Monoclonal Antibody to Mouse CTLA-4 (Clone : MCT.E9) (Discontinued)

Clonality :	Monoclonal
Clone Name :	MCT.E9
Application :	ELISA
Gene :	Ctla4
Gene ID :	12477
Uniprot ID :	P09793
Format :	Purified
Alternative Name :	cytotoxic T-lymphocyte associated protein 4/CD/ GSE/ GRD4/ ALPS5/ CD152/ CTLA-4/ IDDM12/ CELIAC3
Isotype :	Mouse IgG1,Kappa
Immunogen Information :	Recombinant mouse CTLA-4-Fc

Description

Cytotoxic T-lymphocyte-associated protein 4 (CTLA4), also known as CD152, is one of the first well studied immune checkpoint molecules. CTLA4 is expressed on T cells and its expression level can be up-regulated after T cell activation. CTLA4 has two ligands CD80 (B7-1) and CD86 (B7-2). CTLA4 can compete with CD28 binding with these two ligands and transmits an inhibitory signal to T cells. Therapeutic antibodies against CTLA4 can help to stimulate T cells which can then target many cancer cells. Mouse CTLA-4 antibodies with has blocking effect against CD80/CD86 binding with CTLA4 can serve as a great surrogate antibody in mouse model. Anti-Mouse CTLA-4 Antibody (MCT.E9), mAb, Mouse is produced from the hybridoma resulting from fusion of SP2/0 myeloma and B-lymphocytes obtained from mouse immunized with recombinant mouse CTLA4-Fc

Product Info

Amount :	40 µg
Purification :	Protein A chromatography
Content :	0.5 mg/ml, lyophilized with PBS, pH 7.4, containing 0.02% sodium azide.
Storage condition :	The antibody is stable in lyophilized form if stored at -20°C or below. The reconstituted antibody can be stored for 2-3 weeks at 2-8°C. For long term storage, aliquot and store at -20°C or below. Avoid repeated freezing and thawing cycles.

Application Note

ELISA detection: 0.01-0.1 µg/ml
ELISA blocking: 10-15 µg/ml

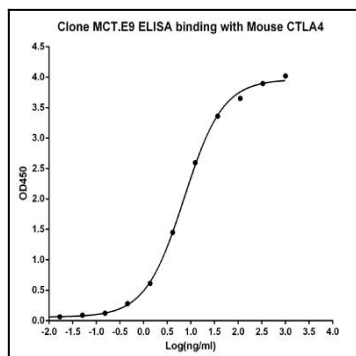


Figure-1 : ELISA binding of CTLA4 antibody (Clone: MCT.E9) with mouse CTLA4 recombinant protein, Coating antigen: CTLA4-Fc at 1 $\mu\text{g/ml}$, CTLA4 antibody dilution start from 1000 ng/ml, EC50 is 7.191 ng/ml

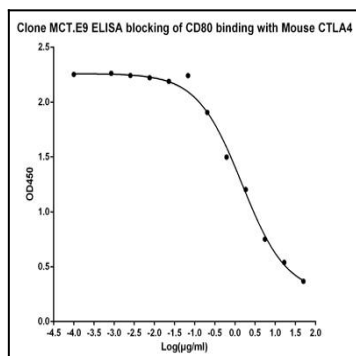


Figure-2 : ELISA blocking of mouse CTLA4 antibody (Clone: MCT.E9) against mouse CD80 recombinant protein and binding with Mouse CTLA4 recombinant protein. Coating antigen: CD80 at 0.5 $\mu\text{g/ml}$. Mouse CTLA4 final concentration: 0.5 $\mu\text{g/ml}$. CTLA4 antibody dilution start from 50 $\mu\text{g/ml}$, IC50= 1.491 $\mu\text{g/ml}$.

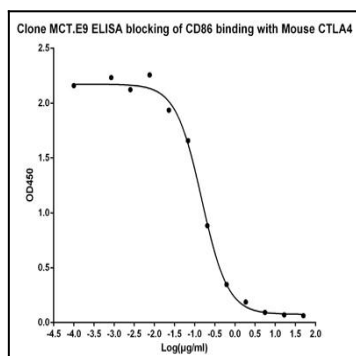


Figure-3 : ELISA blocking of mouse CTLA4 antibody (Clone: MCT.E9) against mouse CD86 recombinant protein and binding with Mouse CTLA4 recombinant protein. Coating antigen: CD86 at 0.5 $\mu\text{g/ml}$. Mouse CTLA4 final concentration: 2 $\mu\text{g/ml}$. CTLA4 antibody dilution start from 50 $\mu\text{g/ml}$, IC50=0.1494 $\mu\text{g/ml}$.