

## 45-1080: Mouse Monoclonal Antibody to Human TIM-3 (Clone : TI.H3) (Discontinued)

<b>Clonality :</b>	Monoclonal
<b>Clone Name :</b>	TI.H3
<b>Application :</b>	ELISA
<b>Gene :</b>	HAVCR2
<b>Gene ID :</b>	84868
<b>Uniprot ID :</b>	Q8TDQ0
<b>Format :</b>	Purified
<b>Alternative Name :</b>	T-Cell Immunoglobulin Mucin Receptor 3/HAVCR2/ CD366/ KIM-3/ TIMD3/ Tim-3/ TIMD-3/ HAVcr-2
<b>Isotype :</b>	Mouse IgG1, Kappa
<b>Immunogen Information :</b>	Recombinant human TIM3-Fc

### Description

TIM-3 (T cell immunoglobulin and mucin domain-3), is a member of the TIM family of immune regulating molecules. Its binding to Galectin-9 induces a range of immunosuppressive functions which enhance immune tolerance and inhibit anti-tumor immunity. Anti-Human TIM3 Antibody (TI.H3), mAb, Mouse is produced from the hybridoma resulting from fusion of SP2/0 myeloma and B-lymphocytes obtained from mouse immunized with recombinant human TIM3-Fc .

### Product Info

<b>Amount :</b>	40 µg
<b>Purification :</b>	Protein A chromatography
<b>Content :</b>	0.5 mg/ml, lyophilized with PBS, pH 7.4, containing 0.02% sodium azide.
<b>Storage condition :</b>	The antibody is stable in lyophilized form if stored at -20°C or below. The reconstituted antibody can be stored for 2-3 weeks at 2-8°C. For long term storage, aliquot and store at -20°C or below. Avoid repeated freezing and thawing cycles.

### Application Note

**ELISA detection:** 0.01-0.1 µg/ml

**Flow cytometry:** 5 -7 µg/ml

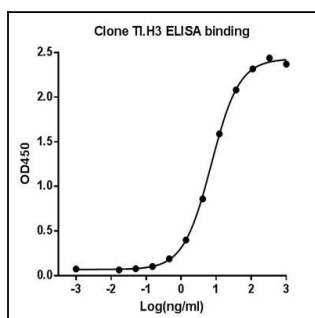


Figure-1 : ELISA binding of human TIM3 antibody (Clone: TI.H3) with Human TIM3 recombinant protein, Coating antigen: TIM3-Fc at 0.5 µg/ml, TIM3 antibody dilution start from 1000 ng/ml, EC50= 7.26 ng/ml.

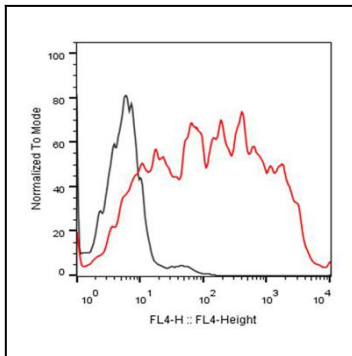


Figure-2 : Flow cytometric analysis of TIM3 Antibody (Clone: TI.H3) on CHO-K1/TIM3 stable cell expressing TIM3 (Red histogram) and CHO negative control cell (Black histogram) at 5  $\mu\text{g/ml}$ ,  $2.5 \times 10^6$  cells/reaction. iFluor647 conjugated Goat Anti-Mouse IgG used as Secondary Antibody.