

45-1078: Mouse Monoclonal Antibody to Human CTLA-4 (Clone : CT.E8) (Discontinued)

Clonality :	Monoclonal
Clone Name :	CT.E8
Application :	ELISA
Gene :	CTLA4
Gene ID :	1493
Uniprot ID :	P16410
Format :	Purified
Alternative Name :	cytotoxic T-lymphocyte associated protein 4/CD/ GSE/ GRD4/ ALPS5/ CD152/ CTLA-4/ IDDM12/ CELIAC3
Isotype :	Mouse IgG1, Kappa
Immunogen Information :	Recombinant human CTLA4-Fc

Description

CTLA-4 (cytotoxic T-lymphocyte-4, designated CD152), is a type I transmembrane T cell inhibitory molecule that is a member of the Ig superfamily. CTLA-4 is recruited from intracellular vesicles to the immunological synapse beginning 1-2 days after T cell activation. It forms a linear lattice with B7-1 on APC, inducing negative regulatory signals and ending T cell activation.

Product Info

Amount :	40 µg
Purification :	Protein A chromatography
Content :	0.5 mg/ml, lyophilized with PBS, pH 7.4, containing 0.02% sodium azide.
Storage condition :	The antibody is stable in lyophilized form if stored at -20°C or below. The reconstituted antibody can be stored for 2-3 weeks at 2-8°C. For long term storage, aliquot and store at -20°C or below. Avoid repeated freezing and thawing cycles.

Application Note

ELISA detection: 0.01-0.1 µg/ml

ELISA blocking: 10-15 µg/ml

Flow cytometry: 5-7 µg/ml

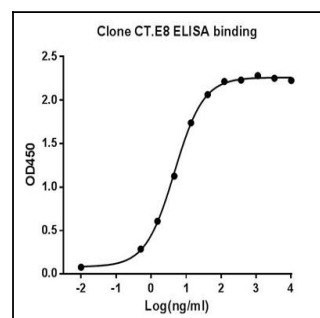
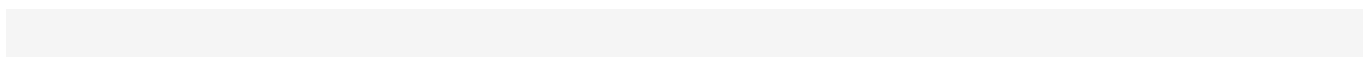


Figure-1 : ELISA binding of CTLA4 antibody (Clone: CT.E8) with Human CTLA4 recombinant protein, Coating antigen: CTLA4-Fc at 0.5 µg/ml, CTLA4 antibody dilution start from 10000 ng/ml, EC50= 4.66 ng/ml

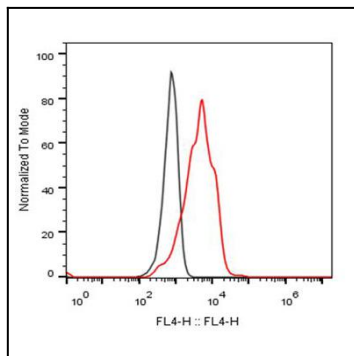


Figure-2 : Flow cytometric analysis of CTLA4 Antibody (Clone: CT.E8) on CHO-K1/CTLA4 stable cell expressing CTLA4 (Red histogram) and CHO negative control cell (Black histogram) at 5 $\mu\text{g/ml}$, 2.5×10^6 cells/reaction, iFluor647 conjugated Goat Anti-Mouse IgG used as secondary antibody.