

45-1074: Mouse Monoclonal Antibody to Human PD-1 (Clone : PD1.D3)

Clonality :	Monoclonal
Clone Name :	PD1.D3
Application :	ELISA
Gene :	PDCD1
Gene ID :	5133
Uniprot ID :	Q15116
Format :	Purified
Alternative Name :	Programmed cell death protein 1, Protein PD-1, hPD-1, CD279
Isotype :	Mouse IgG1,Kappa
Immunogen Information :	Recombinant human PD-1-Fc

Description

Programmed cell death protein 1 (PD-1), is cell surface receptor expressing on T cells and pro-B cells. Binding of its two ligands PD-L1 and PD-L2 could result in down-regulation of the immune system by inhibiting the T-cell activation process. Thus, PD-1 is an important immune checkpoint and popular target for therapeutic antibodies against many cancers. Anti-Human PD-1 Antibody (PD1.D3), mAb, Mouse is produced from the hybridoma resulting from fusion of SP2/0 myeloma and B-lymphocytes obtained from mouse immunized with recombinant human PD-1-Fc .

Product Info

Amount :	40 µg
Purification :	Protein A chromatography
Content :	0.5 mg/ml, lyophilized with PBS, pH 7.4, containing 0.02% sodium azide.
Storage condition :	The antibody is stable in lyophilized form if stored at -20°C or below. The reconstituted antibody can be stored for 2-3 weeks at 2-8°C. For long term storage, aliquot and store at -20°C or below. Avoid repeated freezing and thawing cycles.

Application Note

ELISA detection: 0.01-0.1 µg/ml
ELISA blocking: 10-15 µg/ml
Flow cytometry: 5-10 µg/ml
Blockade of Receptor-ligand Interaction in Flow cytometry: 5 µg/ml

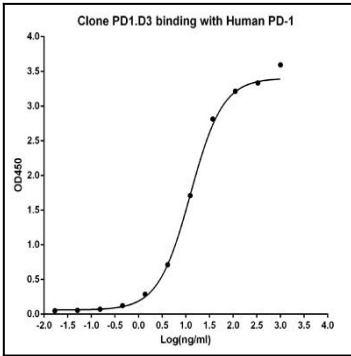


Figure-1 : ELISA binding of human PD-1 antibody (Clone: PD1.D3) with Human PD-1 recombinant protein. Coating antigen: PD-1-Fc, 1µg/ml. PD-1 antibody dilution start from 1000ng/ml, EC50= 12.5 ng/ml.

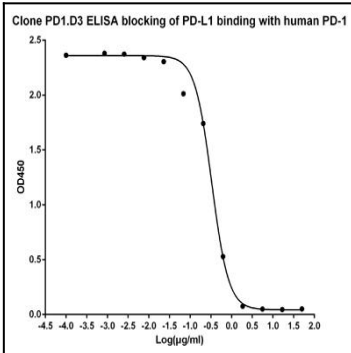


Figure-2 : ELISA blocking of human PD-1 antibody (Clone: PD1.D3) against Human PD-L1 recombinant protein binding with Human PD-1 recombinant protein, Coating antigen: PD-1-Fc at 1µg/ml, PD-L1-Fc final concentration: 0.5µg /ml, PD-1 antibody dilution start from 50µg/ml, IC50= 0.33µg/ml

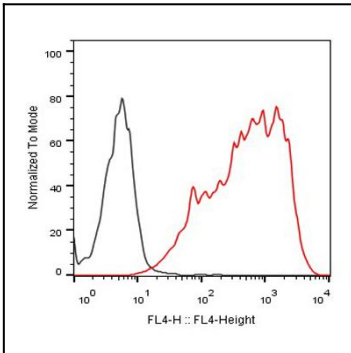


Figure-3 : Flow cytometric analysis of PD-1 Antibody (Clone: PD1.D3) on CHO-K1/PD1 stable cell expressing PD-1 (Red histogram) and CHO negative control cell (Black histogram) at 5 µg/ml, 2.5x10⁵ cells/reaction, iFluor647 conjugated Goat Anti-Mouse IgG used as secondary antibody

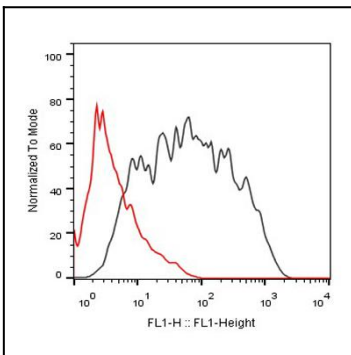


Figure-4 : FACS ligand blocking tests of PD-1 Antibody (Clone: PD1.D3) on the binding of human PD-1 cell line with Human PD-L1 (Red histogram), CHO negative control cell (Black histogram), Antibody working concentration: 5 µg/ml, 2.5x10⁵ cells/reaction. Ligand (PD-L1) working concentration: 1 µg/ml, Alexa Fluor 647 Conjugated Affinipure Goat anti-human IgG (H + L) used as secondary antibody