

45-1069: Mouse Monoclonal Antibody to CBP Tag (Clone : 1D11E5)

Clonality :	Monoclonal
Clone Name :	1D11E5
Application :	ELISA
Format :	Purified
Isotype :	Mouse IgG2b,Kappa
Immunogen Information :	CBP tag peptide conjugated to KLH

Description

CBP affinity tag is a useful tag in protein study which can be added to the N or C terminus of proteins of interest through DNA recombinant technology. The tag is derived from muscle myosin light-chain kinase. The tag comprises 26 amino acid residues with the molecular weight of 4 kDa and sequence of KRRWKKNFIAVSAANRFKISSSGAL. CBP tag has the relatively high affinity for calmodulin (CaM). CBP-tagged proteins can be purified from crude cell extracts through CaM affinity resin. CBP Tag antibody is a useful tool in analysis of CBP-tagged proteins. CBP Tag Antibody, mAb, Mouse is produced from the hybridoma resulting from fusion of SP2/0-Ag14 myeloma and B-lymphocytes harvested from mouse immunized with CBP tag peptide conjugated to KLH.

Product Info

Amount :	40 µg
Purification :	Protein A chromatography
Content :	0.5 mg/ml, lyophilized with PBS, pH 7.4, containing 0.02% sodium azide.
Storage condition :	The antibody is stable in lyophilized form if stored at -20°C or below. The reconstituted antibody can be stored for 2-3 weeks at 2-8°C. For long term storage, aliquot and store at -20°C or below. Avoid repeated freezing and thawing cycles.

Application Note

Western blot: 1-2 µg/ml.

Immunoprecipitation: 1-2 µg/ml.

ELISA: 0.001-0.002 µg/ml.

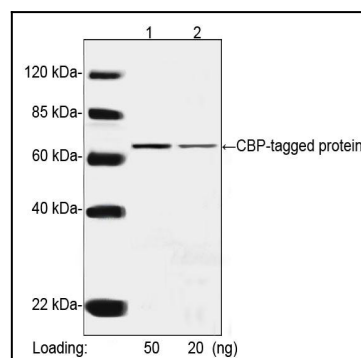


Figure-1 : Western blot analysis of CBP Tag Antibody (Clone: 1D11E5) at 1 µg/ml on CBP-tagged protein (50 & 20ng). IRDye 800 Conjugated affinity Purified Goat Anti-Mouse IgG was used as secondary Antibody.

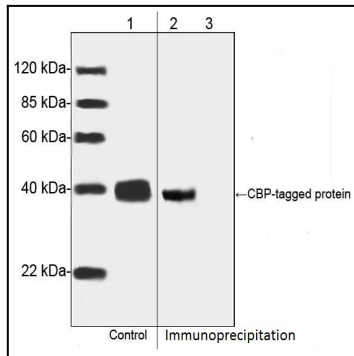


Figure-2 : Western blot analysis of CBP Tag Antibody (Clone: 1D11E5) on 1: CBP-tagged protein from the transfected CHO cell lysates as input control, 2: Immunoprecipitates of CBP-tagged protein from the transfected CHO cell lysates, 3: Immunoprecipitates of the CBP-tagged protein from the transfected CHO cell lysates with Mouse IgG Control.