

## 45-1059: Mouse Monoclonal Antibody to SUMO-tag (Clone : 4G11E9)

<b>Clonality :</b>	Monoclonal
<b>Clone Name :</b>	4G11E9
<b>Application :</b>	ELISA
<b>Format :</b>	Purified
<b>Isotype :</b>	Mouse IgG2a k
<b>Immunogen Information :</b>	Purified recombinant yeast SUMO protein

### Description

SUMO tags are emerging as a viable alternative for increasing both the expression and solubility of otherwise hard-to-express proteins. The SUMO tag can be cleanly excised using SUMO protease, which recognizes the conformation of SUMO protein rather than a specific sequence within SUMO. The SUMO system can be used effectively in both prokaryotic and eukaryotic systems. SUMO-tag Antibody (4G11E9), mAb, Mouse is suitable for detecting fusion proteins that contain a SUMO-tag. SUMO-tag Antibody (4G11E9), mAb, Mouse is produced from the hybridoma resulting from fusion of Sp2/0 myeloma and lymphocytes obtained from mouse immunized with recombinant yeast SUMO protein.

### Product Info

<b>Amount :</b>	40 µg
<b>Purification :</b>	Protein A chromatography
<b>Content :</b>	0.5 mg/ml, lyophilized with PBS, pH 7.4, containing 0.02% sodium azide
<b>Storage condition :</b>	The antibody is stable in lyophilized form if stored at -20°C or below. The reconstituted antibody can be stored for 2-3 weeks at 2-8°C. For long term storage, aliquot and store at -20°C or below. Avoid repeated freezing and thawing cycles.

### Application Note

ELISA: 0.05-0.2 µg/ml, Western blot: 1-2 µg/ml

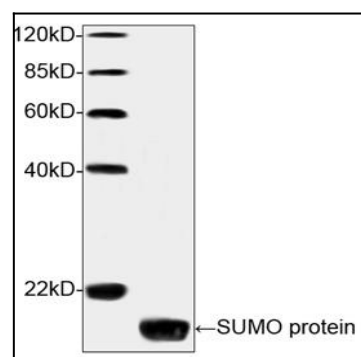


Figure-1 : Western blot analysis of SUMO-tag Antibody (Clone: 4G11E9) at 1 µg/ml on Yeast cell lysates, IRDye 800 Conjugated Goat Anti-Mouse IgG was used as secondary antibody.