

45-1050: Rabbit Polyclonal Antibody to BRCA2(Discontinued)

| | |
|--------------------------------|--|
| Clonality : | Polyclonal |
| Application : | FACS |
| Reactivity : | Human |
| Gene : | BRCA2 |
| Gene ID : | 675 |
| Uniprot ID : | P51587 |
| Format : | Purified |
| Alternative Name : | Breast cancer type 2 susceptibility protein, Fanconi anemia group D1 protein |
| Isotype : | Rabbit IgG |
| Immunogen Information : | KLH-coupled synthetic peptide within residues 2480Å–2530 of human BRCA2 |

Description

Breast cancer type 2 susceptibility protein (BRCA2) is involved in double-strand break repair and/or homologous recombination. It may participate in S phase checkpoint activation. In addition, It interacts with RAD51 and DSS1 and binds to ubiquitinated FANCD2. It also interacts with PALB2, enabling the recombinational repair and checkpoints functions. Defects in BRCA2 can cause genetic susceptibility to breast cancer (BC), also called susceptibility to familial breast-ovarian cancer type 2 (BROVCA2). BRCA2 Antibody is developed in rabbit using a KLH-coupled synthetic peptide within residues 2480Å–2530 of human BRCA2 (Swiss Prot: P51587).

Product Info

| | |
|----------------------------|--|
| Amount : | 40 µg |
| Purification : | Immunoaffinity chromatography. |
| Content : | 0.5 mg/ml, lyophilized with PBS, pH 7.4, containing 0.02% sodium azide. |
| Storage condition : | The antibody is stable in lyophilized form if stored at -20°C or below. The reconstituted antibody can be stored for 2-3 weeks at 2-8°C. For long term storage, aliquot and store at -20°C or below. Avoid repeated freezing and thawing cycles. |

Application Note

Flow cytometry: 2 µg for 1 x 10⁶ cells

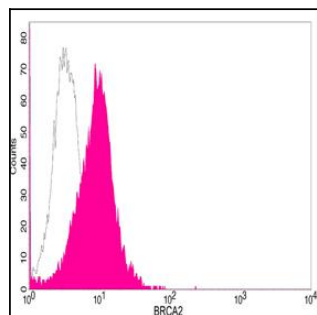


Figure-1 : Flow cytometric analysis of BRCA2 antibody on HEK293 cells. Shaded histogram represents BRCA2 antibody and open histogram represents isotype control. PE conjugated anti-rabbit IgG used as secondary antibody.