

## 45-1036: Rabbit Polyclonal Antibody to Histone H4(Discontinued)

<b>Clonality :</b>	Polyclonal
<b>Application :</b>	ELISA
<b>Reactivity :</b>	Human
<b>Gene :</b>	HIST1H4A
<b>Gene ID :</b>	121504
<b>Uniprot ID :</b>	P62805
<b>Format :</b>	Purified
<b>Alternative Name :</b>	Histone H4 , HIST1H4A, HIST1H4B, HIST1H4C, HIST1H4D, HIST1H4E, HIST1H4F, HIST1H4H, HIST1H4I, HIST1H4J,
<b>Isotype :</b>	Rabbit IgG
<b>Immunogen Information :</b>	Synthetic peptide derived from human Histone H4

### Description

Histone H4 is a core component of nucleosome facilitating nucleosome wrapping and DNA compacting into chromatin. This limits the DNAs accessibility to the cellular machineries for which DNA is required as a template. Histones thereby play a central role in transcription regulation, DNA repair and replication and chromosomal stability. DNA accessibility is regulated via a complex set of post-translational modifications of histones, of which the process is called the histone code, and nucleosome remodeling. Rabbit Anti-Histone H4 Polyclonal Antibody is developed in rabbit using a KLH-coupled synthetic peptide corresponding to the residues of human Histone H4 protein.

### Product Info

<b>Amount :</b>	40 µg
<b>Purification :</b>	Immunoaffinity chromatography
<b>Content :</b>	0.5 mg/ml, lyophilized with PBS, pH 7.4, containing 0.02% sodium azide
<b>Storage condition :</b>	The antibody is stable in lyophilized form if stored at -20°C or below. The reconstituted antibody can be stored for 2-3 weeks at 2-8°C. For long term storage, aliquot and store at -20°C or below. Avoid repeated freezing and thawing cycles.

### Application Note

**ELISA:** 0.05-0.2 µg/ml

**Western blot:** 1-2 µg/ml

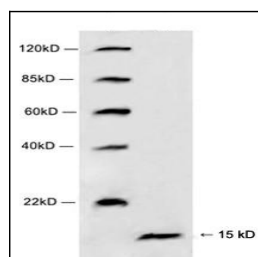


Figure-1 : Western blot analysis of Histone H4 Antibody at 1 µg/ml on HeLa cell lysate, IRDye 800 Conjugated Goat Anti-Rabbit IgG was used as secondary antibody.