

45-1027: Rabbit Polyclonal Antibody to Ty1-tag

Clonality :	Polyclonal
Application :	ELISA, WB
Format :	Purified
Isotype :	Rabbit IgG
Immunogen Information :	Ty1-tag epitope peptide conjugated to KLH

Description

Well-characterized antibodies for epitope tags are common in the study of protein expression in various systems. Rabbit Anti- Ty1-tag Polyclonal Antibody is developed in rabbit using a KLH-coupled synthetic peptide.

Product Info

Amount :	40 µg
Purification :	Immunoaffinity chromatography
Content :	0.5 mg/ml, lyophilized with PBS, pH 7.4, containing 0.02% sodium azide
Storage condition :	The antibody is stable in lyophilized form if stored at -20°C or below. The reconstituted antibody can be stored for 2-3 weeks at 2-8°C. For long term storage, aliquot and store at -20°C or below. Avoid repeated freezing and thawing cycles.

Application Note

ELISA: 0.05-0.2 µg/ml. Western blot: 1-2 µg/ml.

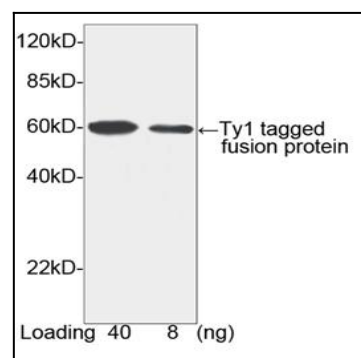


Figure-1 : Western blot analysis of Ty1-tag Antibody at 1 µg/ml on Ty1 tagged fusion protein (40 & 8 ng).

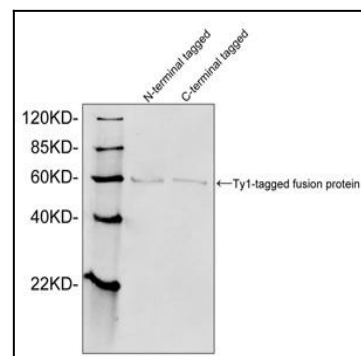


Figure-2 : Western blot analysis of Ty1-tag Antibody at 1 µg/ml on N-terminal and C-terminal of Ty1 tagged fusion protein expressed in E. coli cell lysate. IRDye 800 Conjugated Goat Anti-Rabbit IgG was used as secondary antibody.