

## 45-1026: Rabbit Polyclonal Antibody to IDO(Discontinued)

<b>Clonality :</b>	Polyclonal
<b>Application :</b>	WB
<b>Reactivity :</b>	Mouse
<b>Gene :</b>	IDO1
<b>Gene ID :</b>	3620
<b>Uniprot ID :</b>	P14902
<b>Format :</b>	Purified
<b>Alternative Name :</b>	Indoleamine 2,3-dioxygenase 1, Indoleamine-pyrrole 2,3-dioxygenase
<b>Isotype :</b>	Rabbit IgG
<b>Immunogen Information :</b>	Synthetic peptide KPSKKKPTDGDKSE conjugated to KLH

### Description

Indoleamine 2,3-dioxygenase (IDO) catalyzes the degradation of the essential amino acid L-tryptophan to N-formylkynurenine. IDO has been implicated in protection against intracellular and extracellular pathogens. Rabbit Anti-IDO Polyclonal Antibody is developed in rabbit hosts using a synthetic peptide conjugated to KLH. Rabbit Anti-IDO Polyclonal Antibody is highly purified from rabbit antiserum by Protein A.

### Product Info

<b>Amount :</b>	40 µg
<b>Purification :</b>	Protein A chromatography
<b>Content :</b>	0.5 mg/ml in PBS, pH 7.4, containing 30% glycerol and 0.02% sodium azide
<b>Storage condition :</b>	The antibody is stable for 2-3 weeks if stored at 2-8°C. For long term storage, aliquot and store at -20°C or below. Avoid repeated freezing and thawing cycles.

### Application Note

Western blot: 1-2 µg/ml

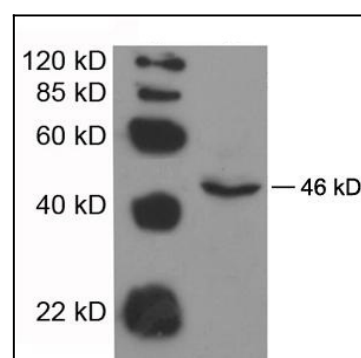


Figure-1 : Western blot analysis of IDO Antibody at 1 µg/ml on Mouse heart tissue lysate (50 µg).