

45-1025: HRP conjugated Rabbit Polyclonal Antibody to E-tag

Clonality :	Polyclonal
Application :	WB, ELISA
Reactivity :	Human
Conjugate :	HRP
Format :	Purified
Isotype :	Rabbit IgG
Immunogen Information :	E epitope tag peptide GAPVPYPDPLEPR conjugated to KLH

Description

Rabbit Anti-E-tag [HRP] Polyclonal Antibody is highly purified from rabbit antiserum by immunoaffinity chromatography and then conjugated to horseradish peroxidase. Rabbit Anti-E-tag [HRP] Polyclonal Antibody is suitable for detecting fusion proteins that contain E-tags.

Product Info

Amount :	40 µg
Purification :	Immunoaffinity chromatography
Content :	0.5 mg/ml, lyophilized with PBS, pH 7.4, containing 1% BSA and 0.01% thimerosal
Storage condition :	The antibody is stable in lyophilized form if stored at -20°C or below. The reconstituted antibody can be stored for 2-3 weeks at 2-8°C. For long term storage, aliquot and store at -20°C or below. Avoid repeated freezing and thawing cycles.

Application Note

ELISA: 0.05-0.2 µg/ml

Western blot: 1-2 µg/ml

Reconstitute the lyophilized powder with deionized water (or equivalent) to an antibody concentration of 0.5 mg/ml.

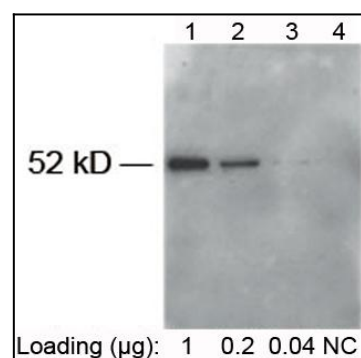


Figure-1 : Western blot analysis of HRP conjugated E-tag Antibody at 1 µg/ml on E-tagged fusion protein (1, 0.2 & 0.04 µg) expressed in HeLa cell lysate (Lane: 1-3), Lane 4: HeLa cell lysate as Negative control.