

## 45-1020: Rabbit Polyclonal Antibody to Tag-100-tag(Discontinued)

<b>Clonality :</b>	Polyclonal
<b>Application :</b>	ELISA
<b>Format :</b>	Purified
<b>Isotype :</b>	Rabbit IgG
<b>Immunogen Information :</b>	Tag-100-tag peptide EETARFQPGYRS conjugated to KLH

### Description

Well-characterized antibodies against short-sequence epitope tags are common in the study of protein expression in several different expression systems. Tag-100 tag is an epitope tag composed of a 12-residue peptide, EETARFQPGYRS, derived from the C-termini of mammalian MAPK/ERK kinases.

### Product Info

<b>Amount :</b>	40 µg
<b>Purification :</b>	Immunoaffinity chromatography
<b>Content :</b>	1 mg/ml in PBS, pH7.4, containing 0.02% sodium azide
<b>Storage condition :</b>	The antibody is stable for 2-3 weeks if stored at 2-8°C. For long term storage, aliquot and store at -20°C or below. Avoid repeated freezing and thawing cycles.

### Application Note

**ELISA:** 0.05-0.2 µg/ml

**Western blot:** 1-2 µg/ml

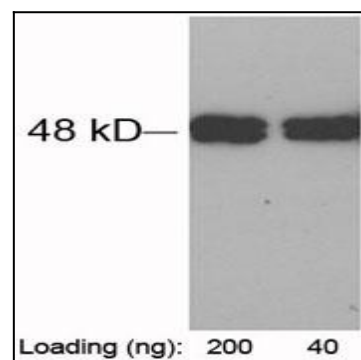


Figure-1 : Western blot analysis of tag-100-tag Antibody at 1 µg/ml on tag-100-tagged fusion protein (200 & 40 ng) expressed in E. coli cell lysate.

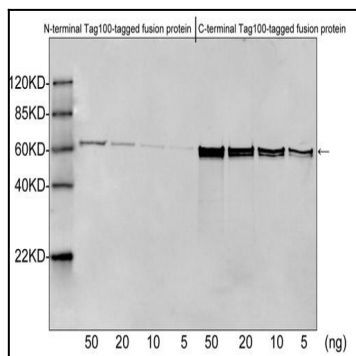


Figure-2 : Western blot analysis of Tag-100-tag Antibody at 1 µg/ml on N terminal & C- terminal of Tag-100-tagged fusion protein (50, 20, 10 & 5 ng) expressed in E. coli cell lysate, IRDye 800 Conjugated Goat Anti-Rabbit IgG was used as secondary antibody.